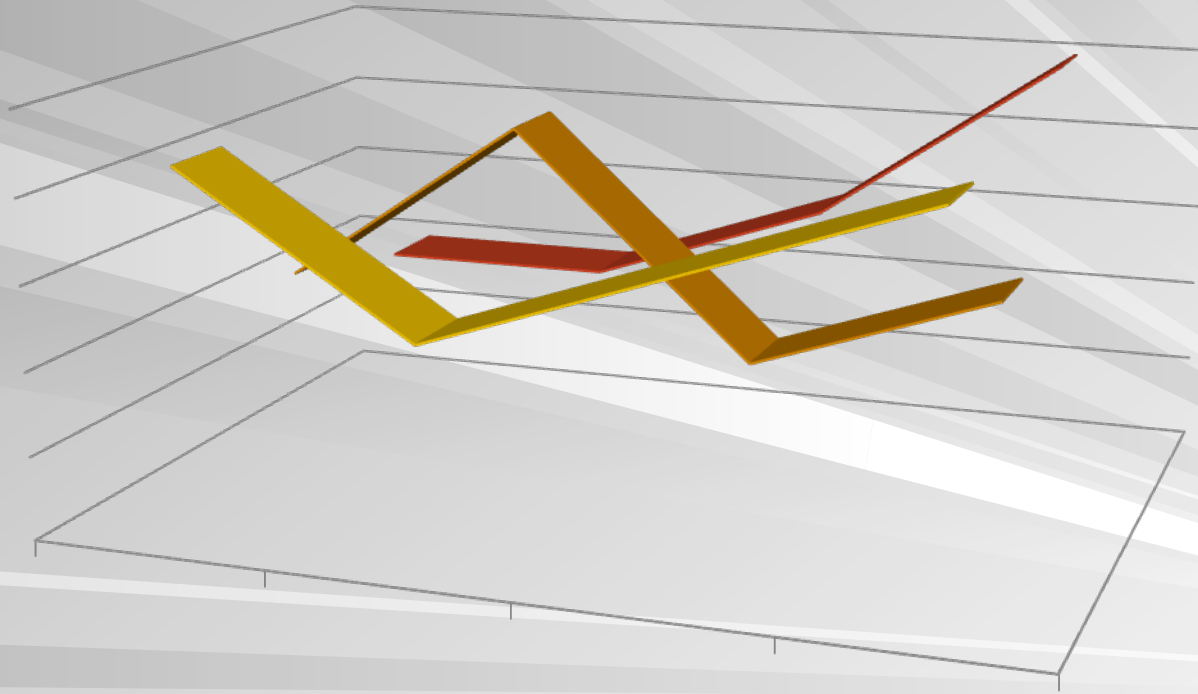


ADHESIVES AND PLASTICIZERS

B.R. Wood, LLC.
419 South Glenwood Avenue
Dalton, GA 30721
Phone: 706-278-1341
Fax: 706-278-6207
Email Address
benny.wood@aatglue.com

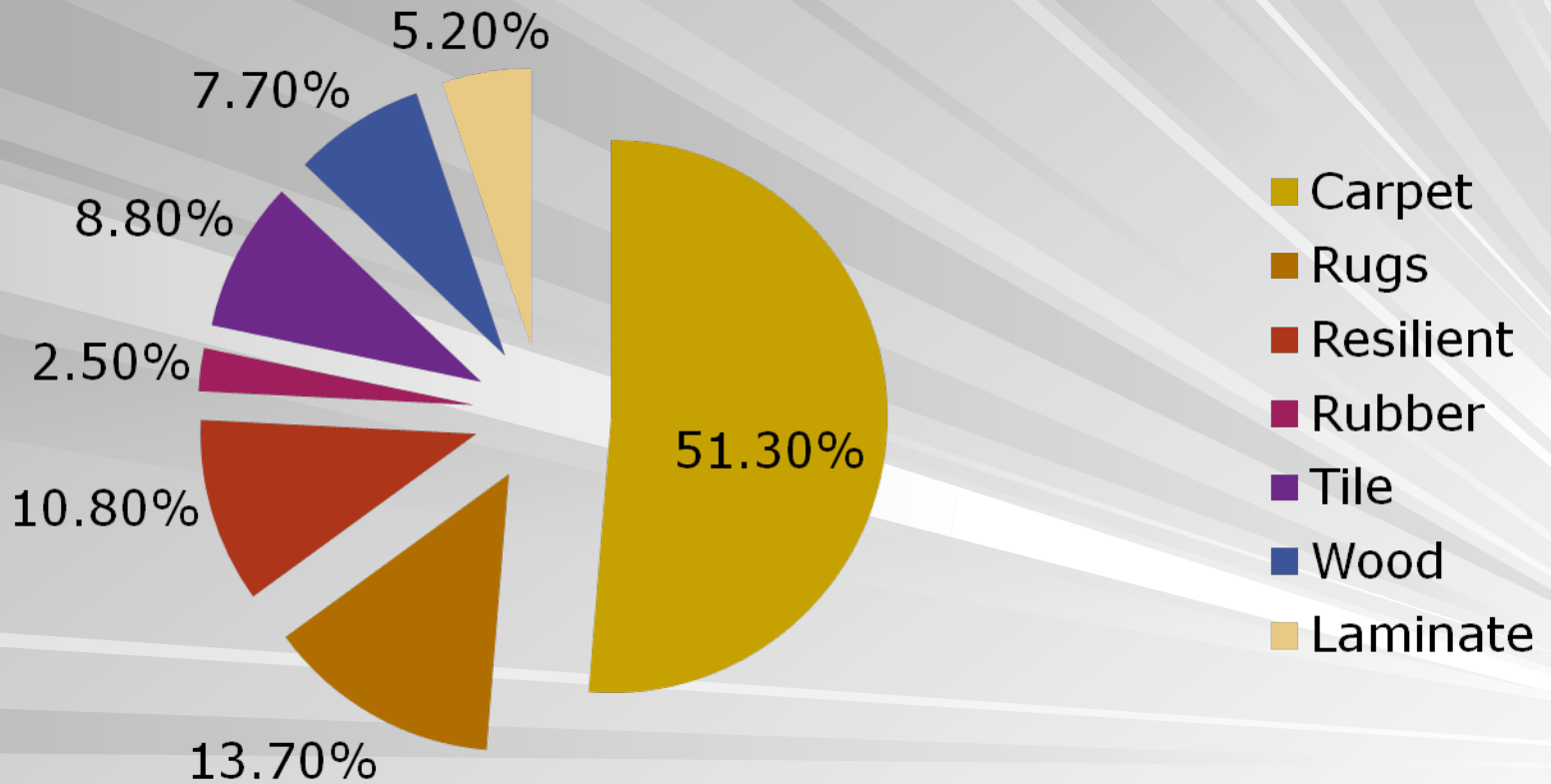
INDUSTRY STATISTICS



2000 Industry Market Share

(by category)

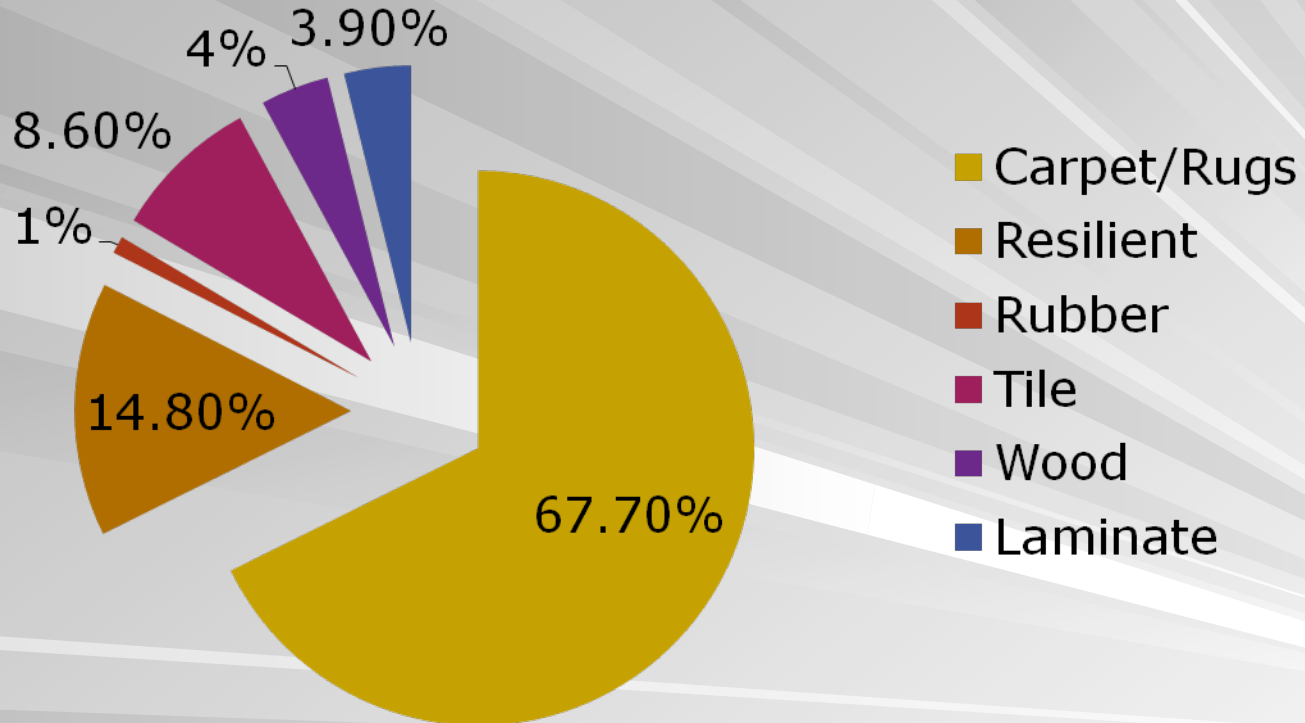
\$19.743 Billion



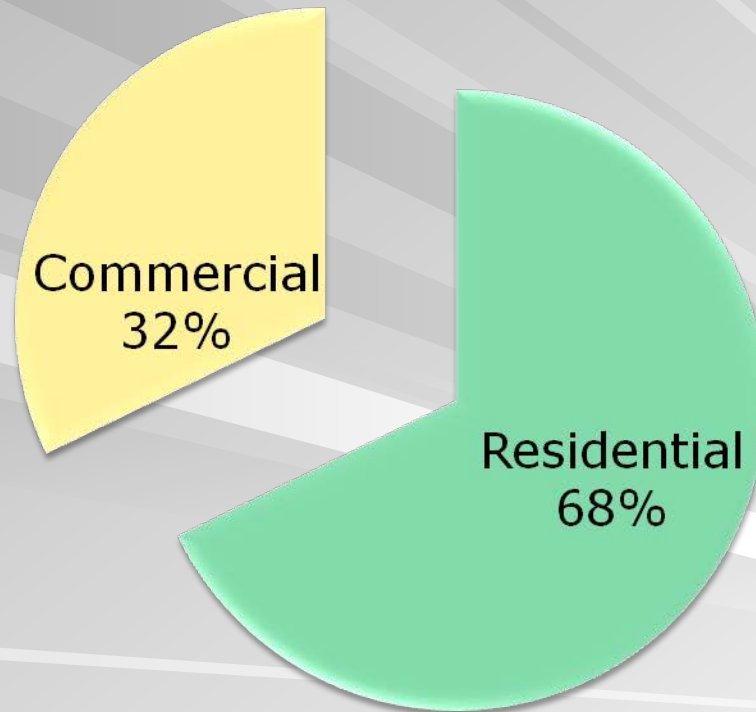
2000 Industry Market Share

(by category)

19.67 Billion Square Feet



Residential Sales vs. Commercial Sales



WHAT ARE ADHESIVES???

- Multipurpose Adhesives
 - a. Display of ingredients
 - b. Sample of products
- Pressure Sensitive Adhesives
- Permanent
 - a. Vinyl
 - b. Rubber
 - c. Linoleum
 - d. Wood
 - e. etc.
- Polyurethane
 - a. Solvent
 - b. Moisture Cure
 - c. Cross-Link
- Epoxy
 - a. 2 Components

ADHESIVE MANUFACTURING AND DESIGN

1. CONVENTIONAL ADHESIVES

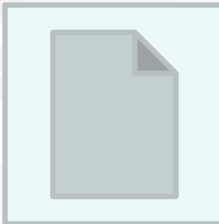
- a. Non-Environmental

2. ENVIRONMENTAL ADHESIVES

- a. Proposition 65
- b. Green Label
- c. Green Label Plus
- d. Green Guard
- e. LEEDS

CARPET & RUG INSTITUTE

- CRI-104 COMMERCIAL INSTALLATION
- CRI-105 RESIDENTIAL INSTALLATION
- INDUSTRY STANDARDS “ANSI”



CONCRETE TESTING

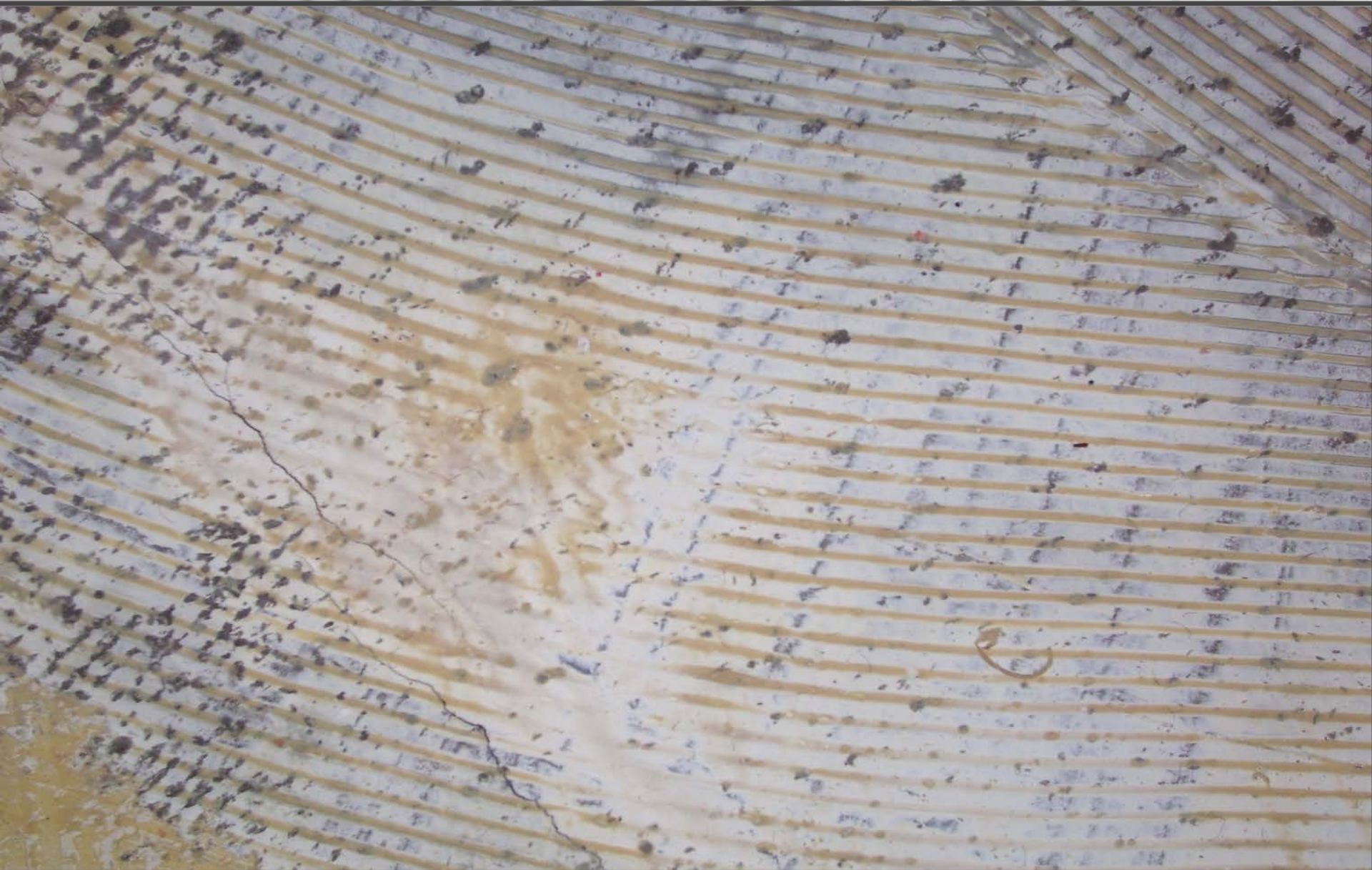
■ TESTING REVIEW...







WRONG TROWEL SIZE AND ALKALI DEGRADATION



FLOORING INSPECTIONS AND INDICATORS

■ Poor adhesion

- Wrong trowel

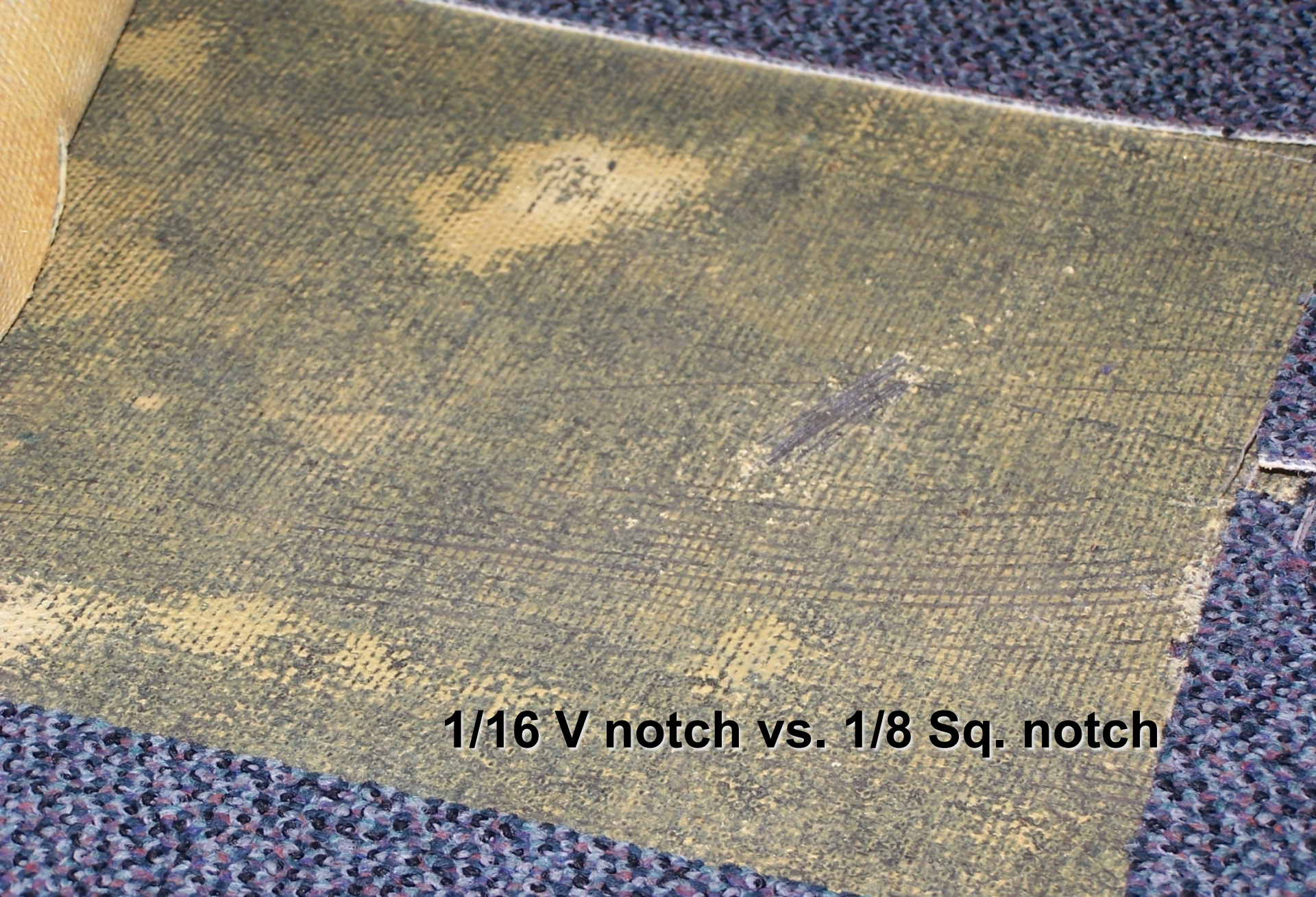
- Moisture/pH

- Old adhesive (residue)

■ Adhesive/Plasticizer Migration



TROWEL TOO SMALL & APPLICATION



1/16 V notch vs. 1/8 Sq. notch

TROWEL

3/32 V notch vs. 1/18 x 1/18 x 1/16 sq. notch





W
R
I
N
K
L
E
S





**DEFECTIVE
INSTALLATION, LAWSUIT**











Cheap Floor Patch



Rocky Road



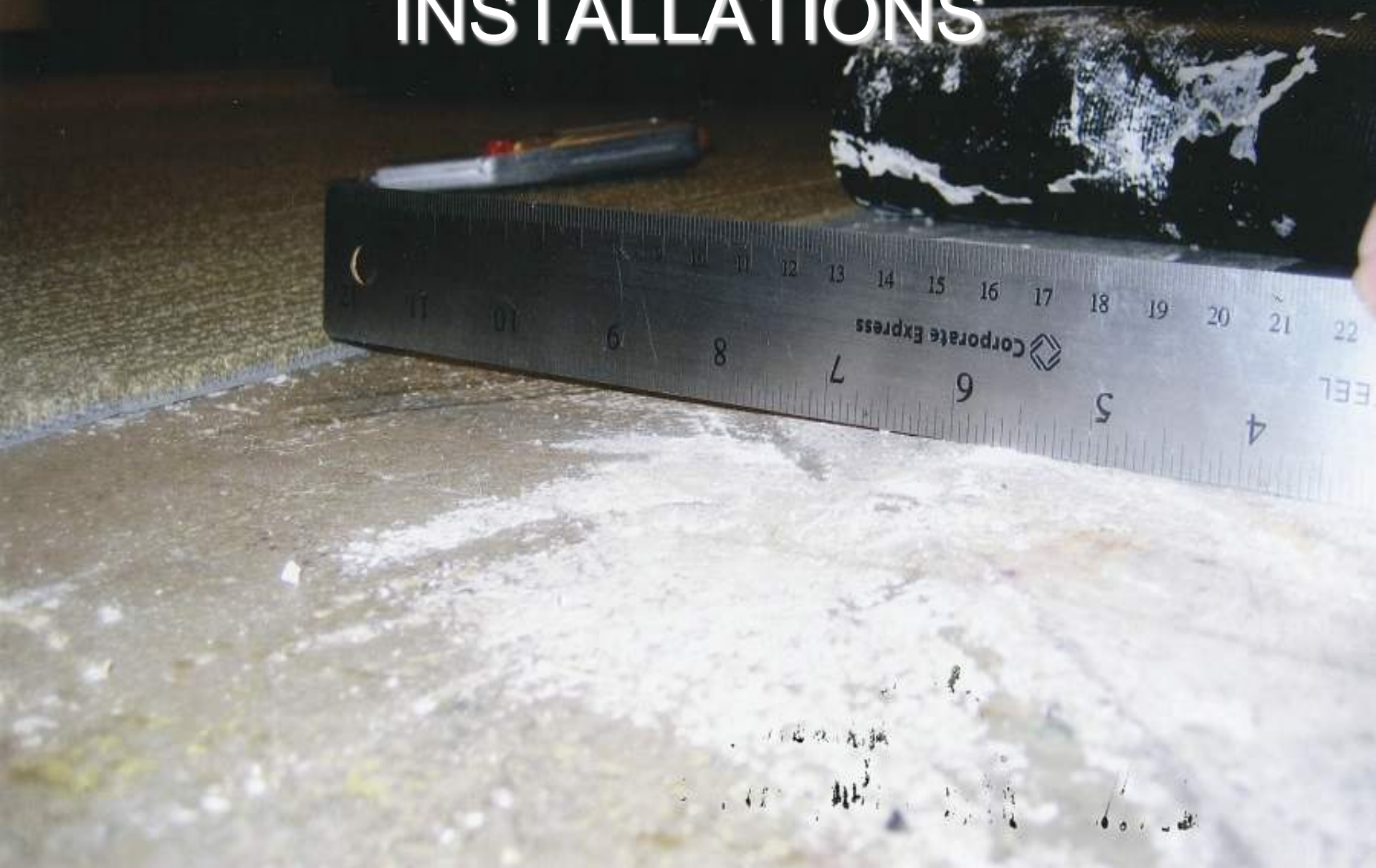
Artificial Subfloor Leveler



Very LARGE Lawsuit



REAL LIFE FLOOR INSTALLATIONS





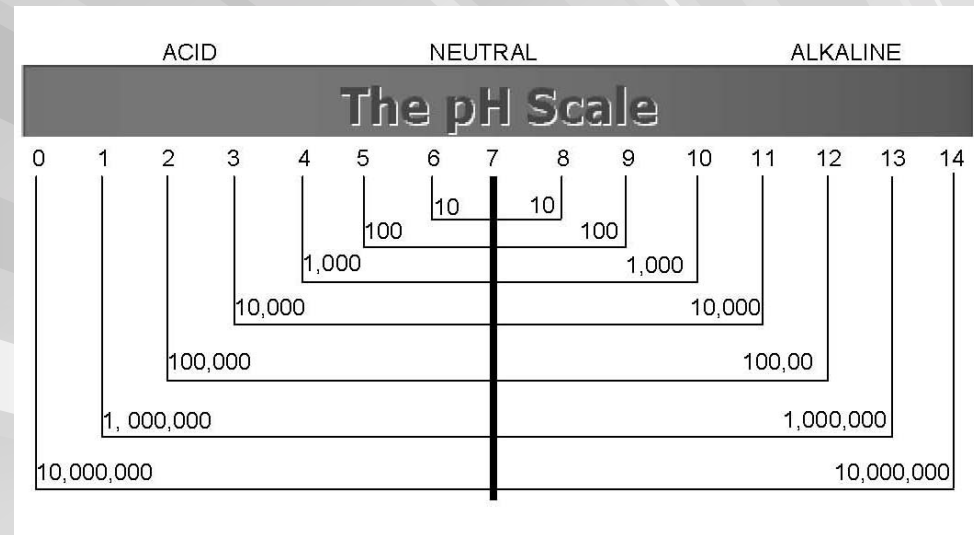


THE ADHESIVE KILLER

THE POWER OF HYDROGEN

pH - WHAT IS IT AND HOW DO WE TEST FOR IT

- pH is a measure of the acidity or alkalinity of any water soluble substance. The pH scale runs from 0-14 where 0- 6.9 is acid, the lower the number the more the acidity. 7.1-14 is alkaline and in this case the higher the number the more alkaline or caustic the product. The mid point of the scale (7.0) is neutral and therefore is neither acid nor alkali.



pH Surface Old Adhesive Concrete Surface

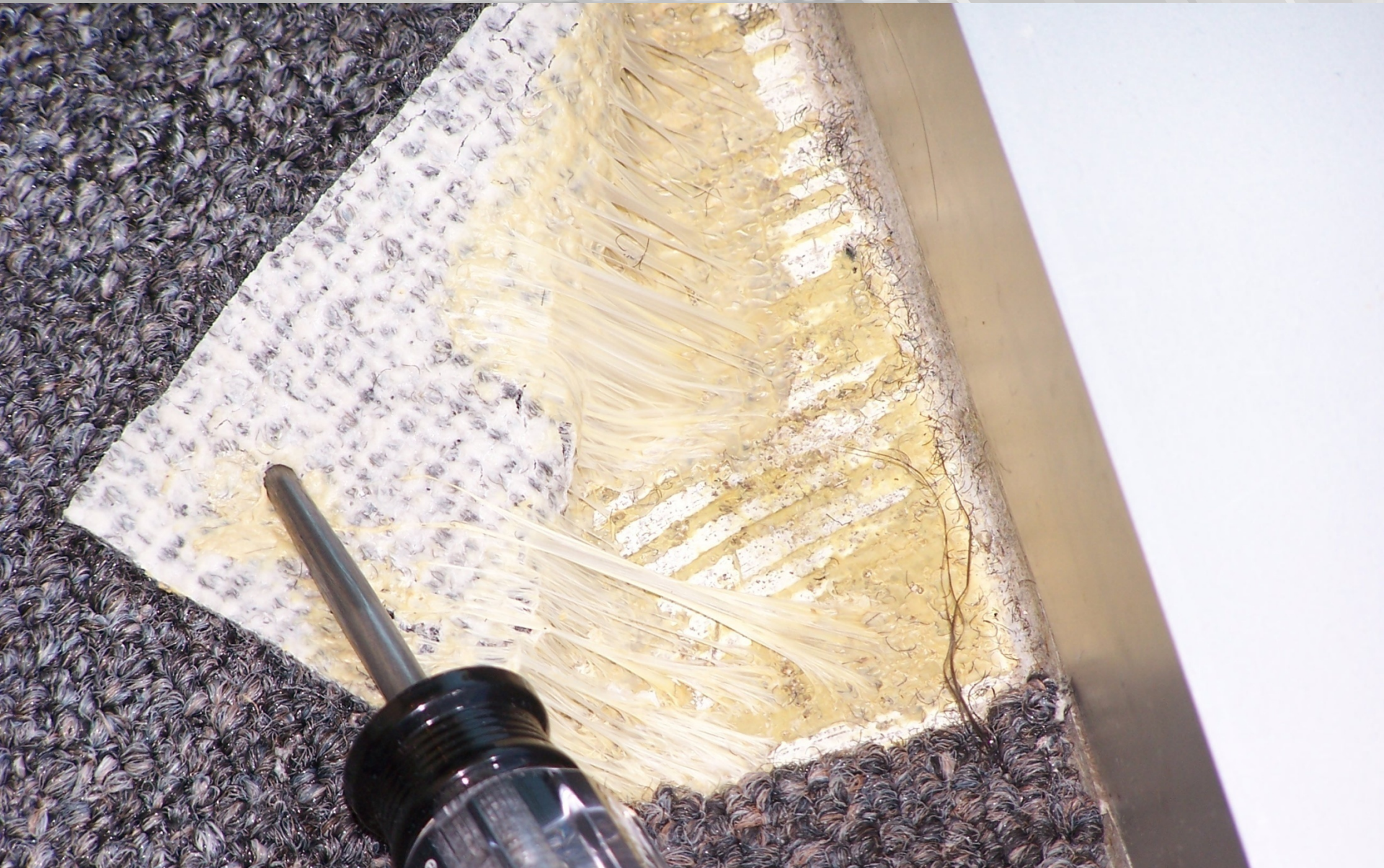
Scarified Concrete Surface



INITIAL STAGES ALKALI DEGRADATION



ACCELERATED ALKALI DEGRADATION



TOTAL ALKALI DEGRADATION



**EPOXY ADHESIVES
NON-EXEMPT**



HOSPITAL MRI LAB, N.C.





EFFECTS OF VARIOUS ADHESIVES ON LONG TERM PERFORMANCE. RUBBER - WATER - SUBSURFACE





EPOXY & MOISTURE (MVE)



WHAT IN THE WORLD IS PLASTICIZER AND WHY DO I CARE?

Plasticizers are generally colorless liquids with a very slight “plastic” odor. Plasticizers are used to convert PVC (polyvinyl chloride), a rigid plastic, into a soft, flexible, and elastic material suitable in use for various manufacturing processes.















CHEMICAL DEGRADATION NOT ALKALI/WATER





Q & A



B.R. Wood & PC Floors Presents:

Concrete, Moisture & Sub-Surfaces

