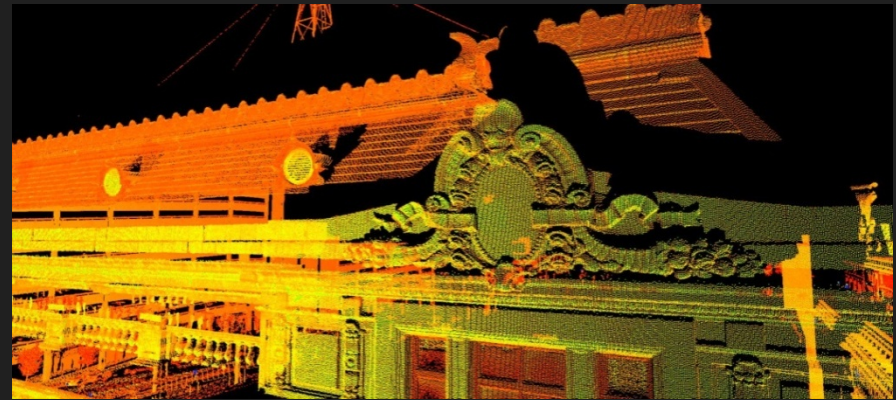


# STRAIGHT TO DIGITAL: SAVING FIELD TIME WITH LIDAR AND MOBILE APPS

W. EVÁN FIGUEROA, PE, LEED® AP  
JULIE SAMUELS, EIT



# Presentation Outline

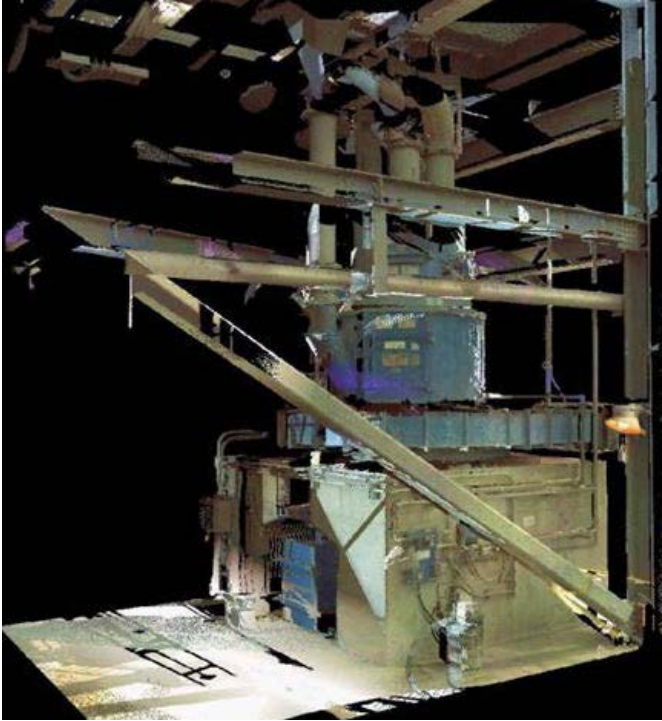
---

## LiDAR

- Introduction to Laser Scanning with an Industrial Example
- Designing with LiDAR Data
- Modeling Example - Dallas Municipal Building

## Mobile Apps

- Tablet Tasks
  - Applications
-



Scan



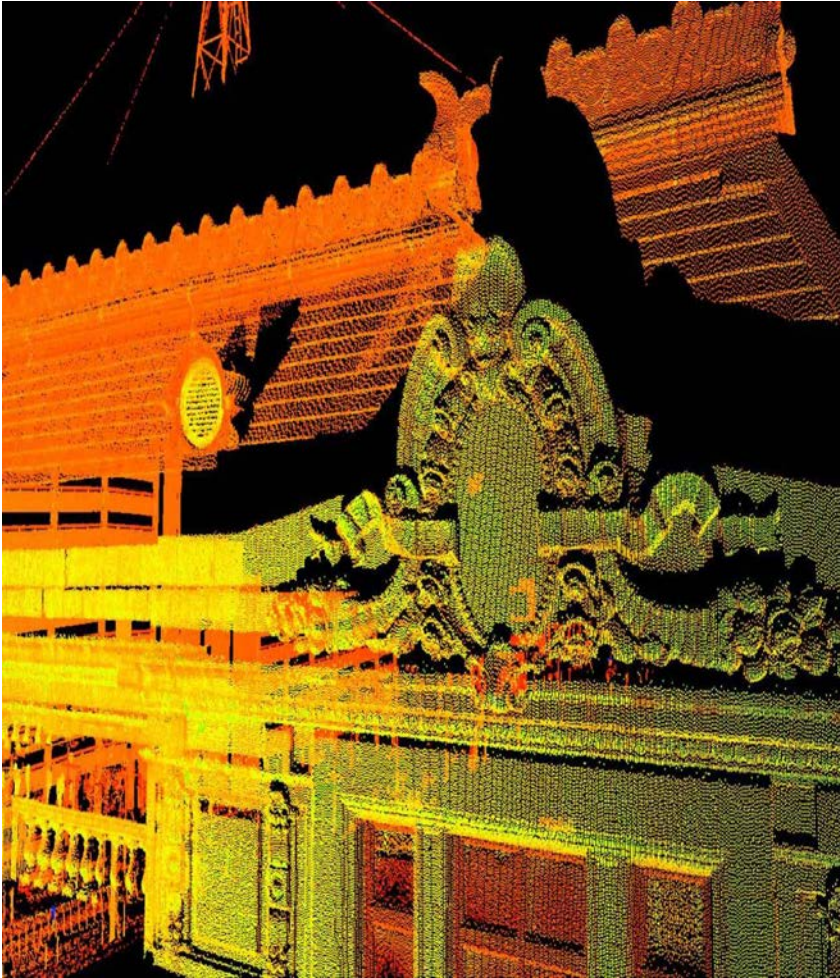
Photo

# What is LiDAR?

- **L**ight **D**etection and **R**anging (LiDAR)
- “Laser scanning” is often used and has the same meaning



# Low Resolution Scan



- Quick 30-second scan to obtain targets
- Points are discernible

# Medium Resolution Scan



In typical scans, the points are not discernible at this scale.





Why use LiDAR?

---

# Complicated Existing Conditions: Safety

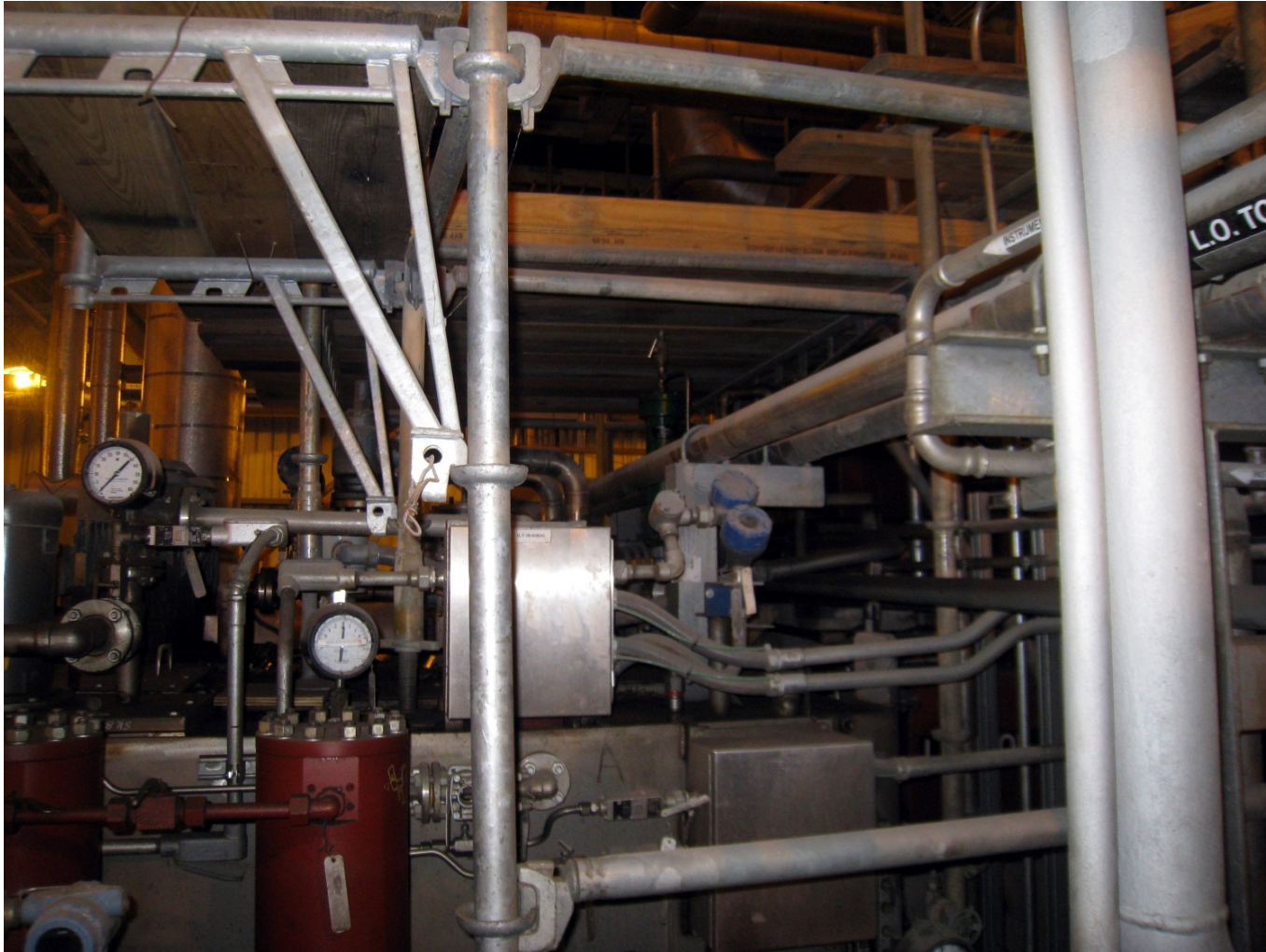




# Complicated Existing Conditions: Potential Clashes



# Complicated Existing Conditions: No Existing Drawings



# Inaccessible











# The Solution: LiDAR + BIM

---



# The Scanning Process

---

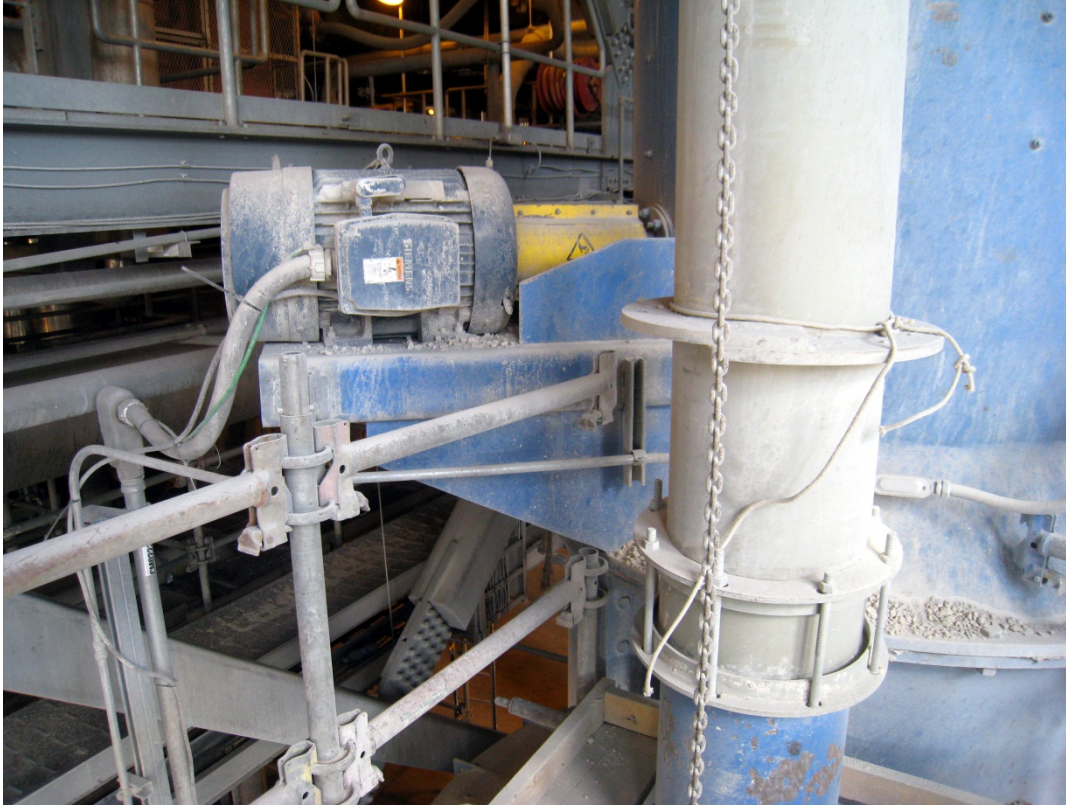


# Case Study: Limestone Mills

- ❑ Pulverized limestone clogs mill when it is moist.
- ❑ Plant personnel were using scaffolding constantly to access the mill to remove the clogs.
- ❑ Scaffolding must be inspected daily and plant pays rent.
- ❑ New platform framing will be shop fabricated and bolted together.



# Case Study: Limestone Mills



Steel framing needs to fit around existing equipment.

# Data Acquisition



# Data Acquisition



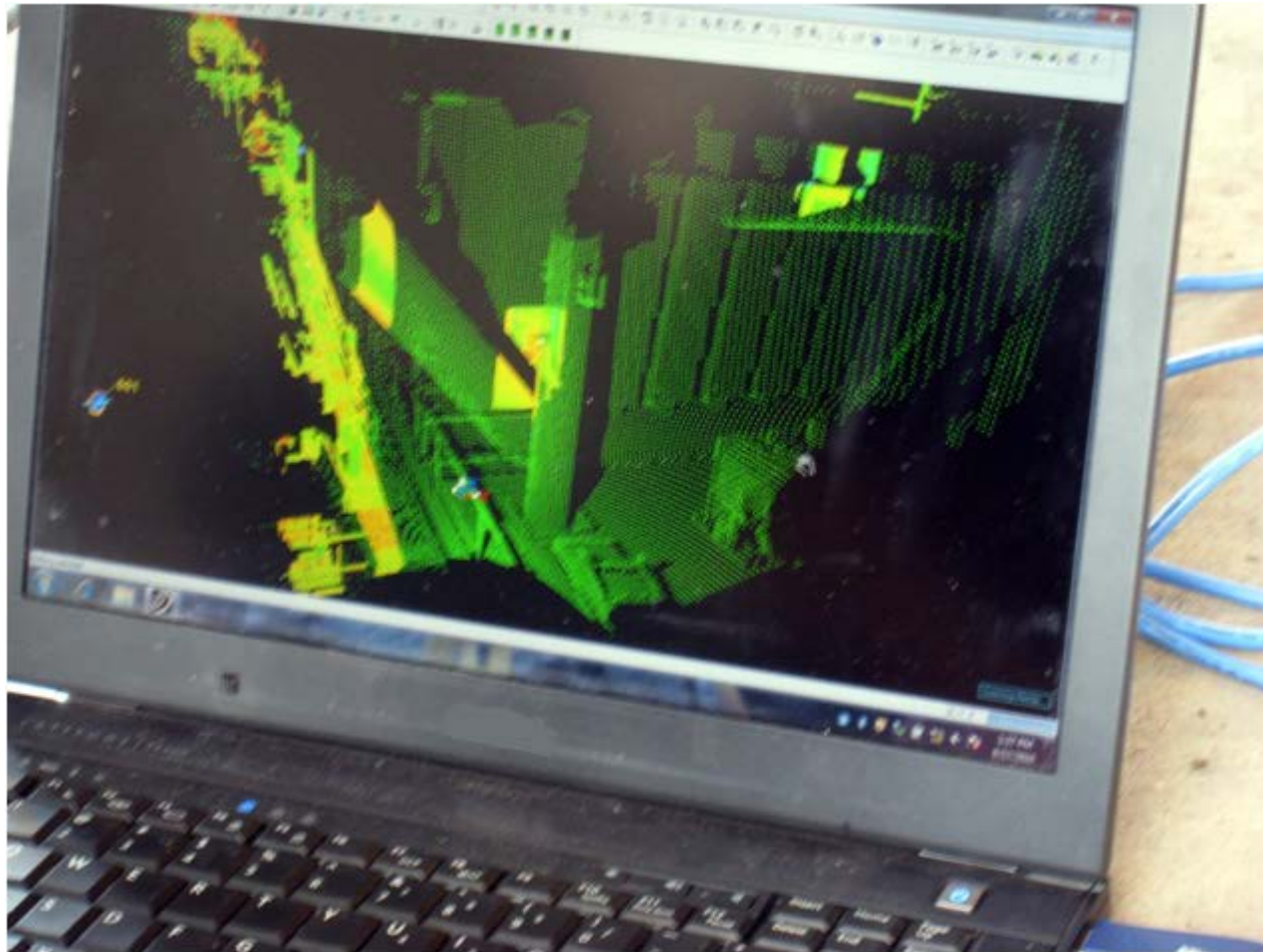
Targets are used to tie multiple scans together (registration).

# Shadows



Shadows are areas out of the line of sight of the scanner.

# Resolution



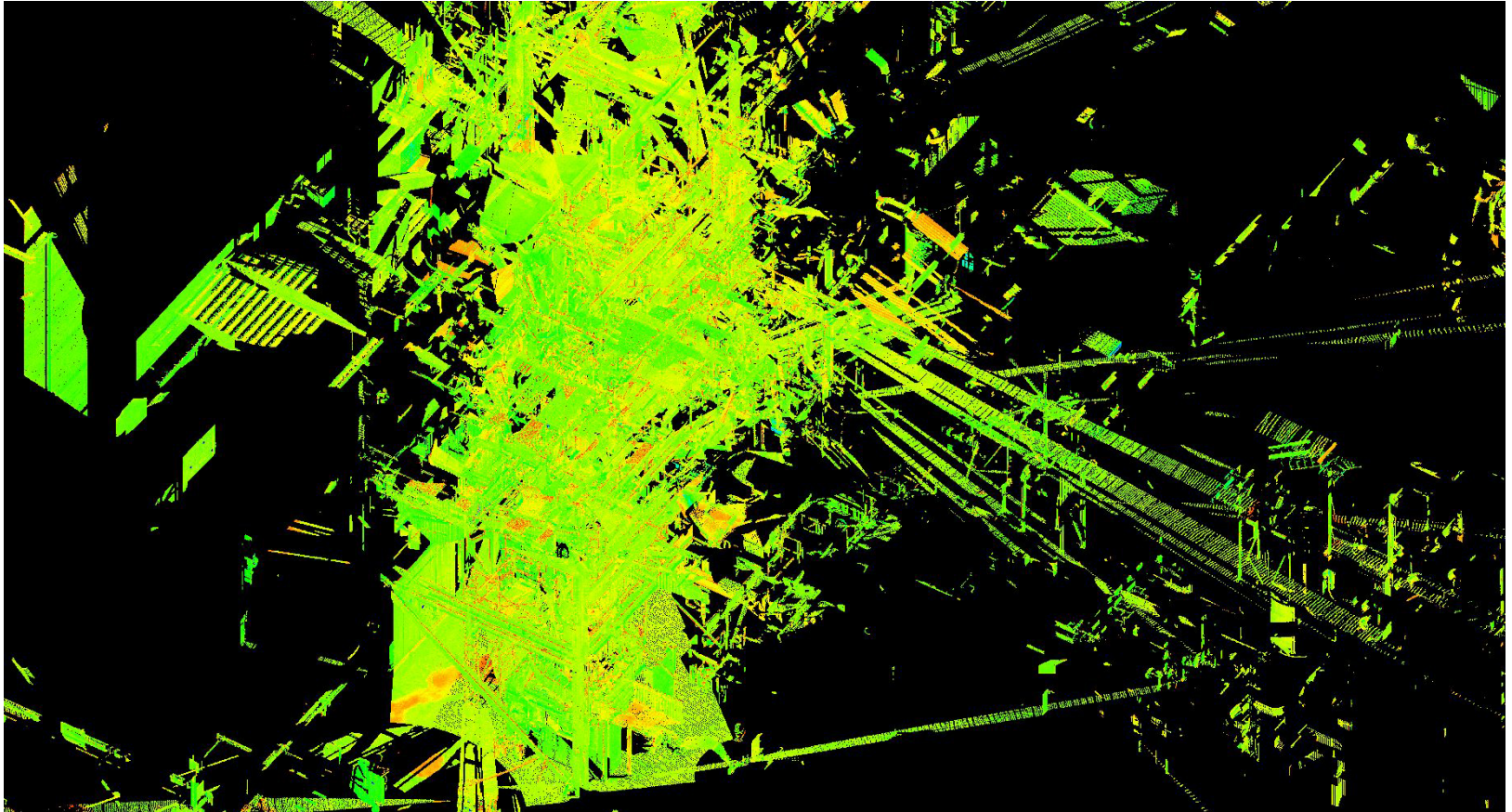
Resolution is affected by distance and time spent scanning.

# Post Processing

---

1. Registration
  2. Elimination of points outside the area of interest
  3. Break the fully assembled point cloud into smaller usable “volumes”
  4. Registration with scans from prior projects
  5. Remove undesirable elements
-

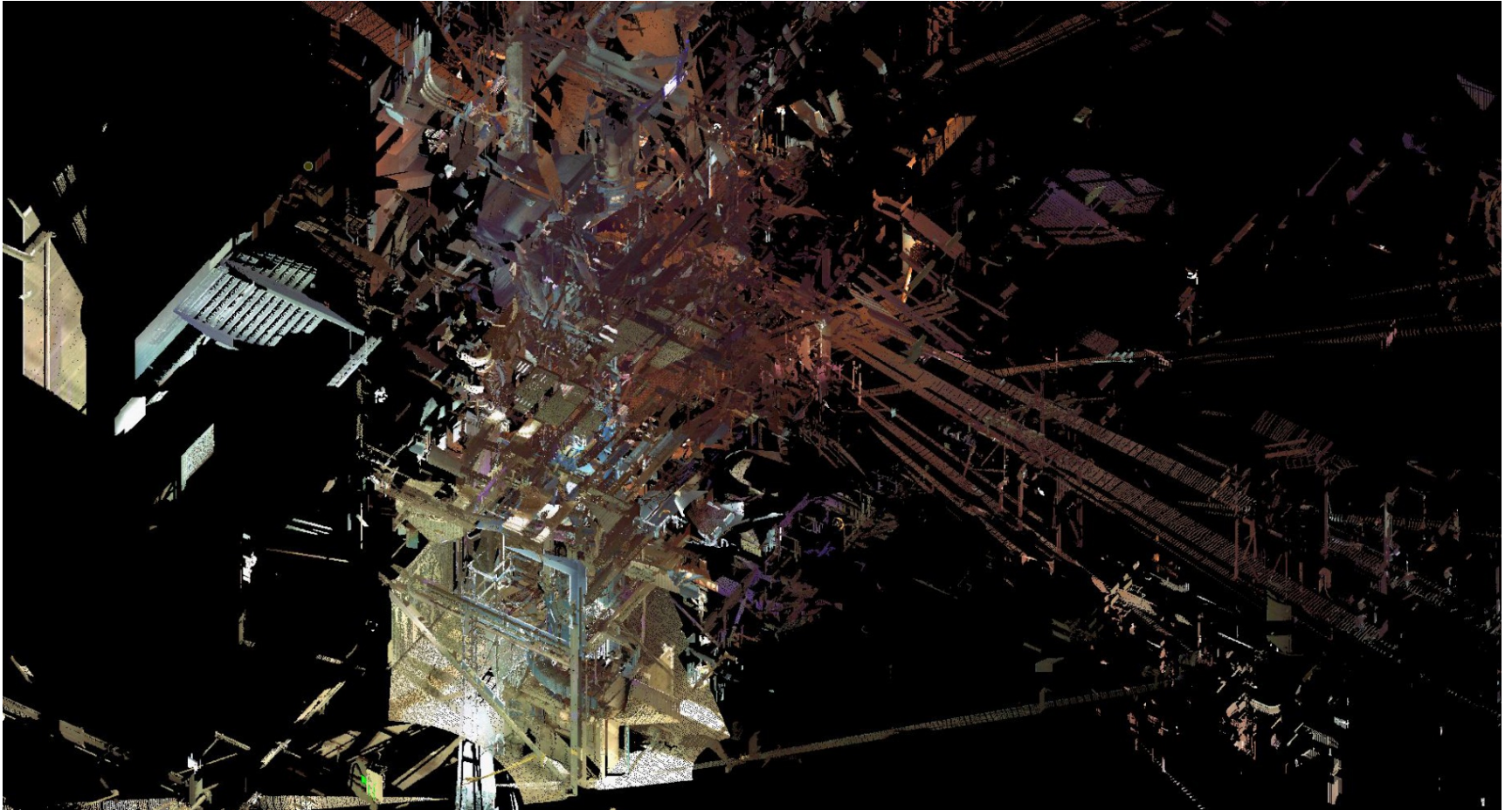
# Registered Point Cloud



Without color attributes from integral camera, it is difficult to discern specific objects at this scale.

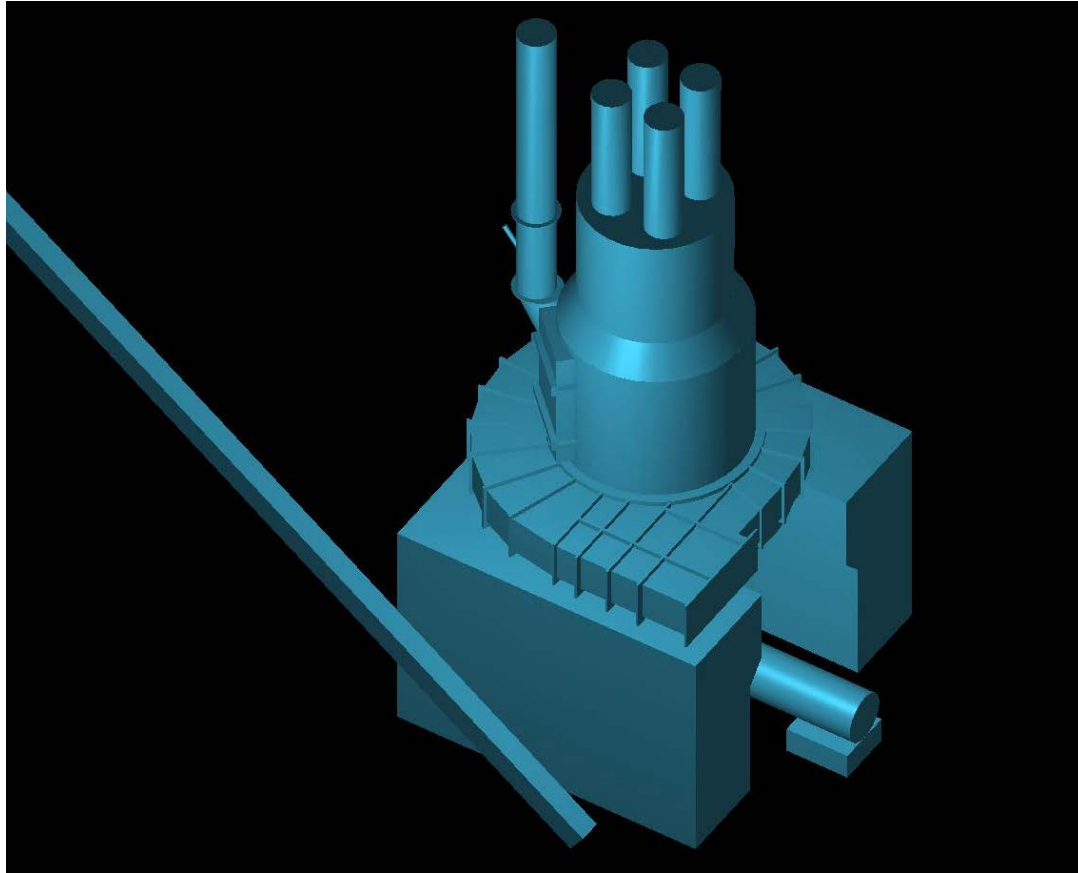


# Registered Point Cloud



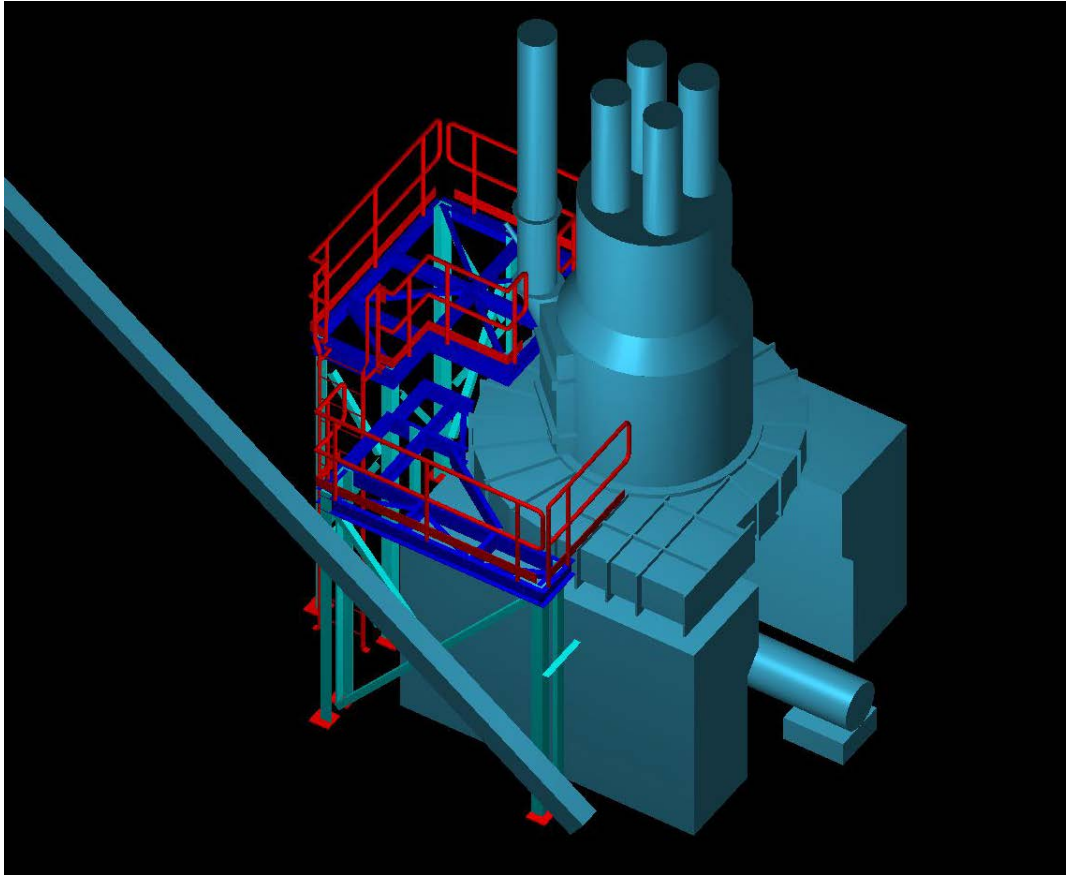
With color, specific objects are easier to distinguish.

# Using LiDAR Data to Create BIM



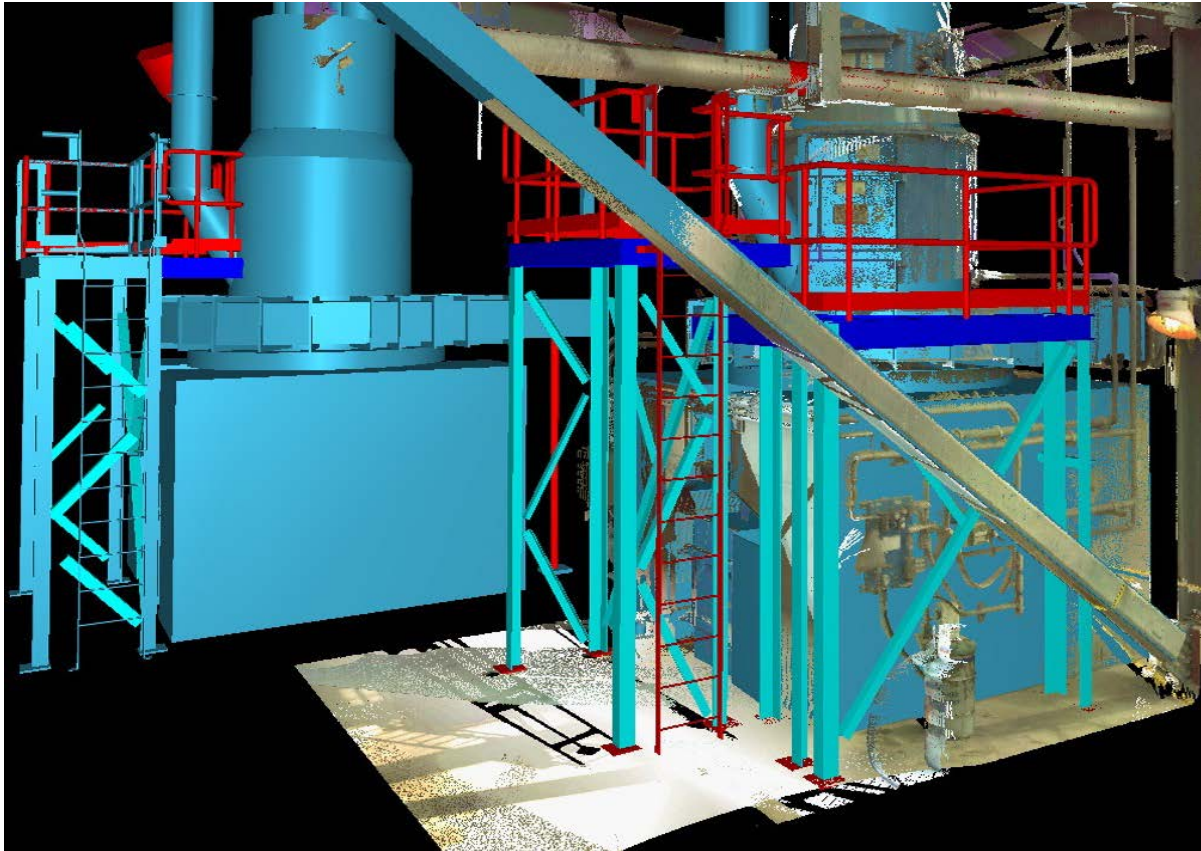
Existing conditions are modeled as needed based on imported point cloud.

# Using LiDAR Data to Create BIM



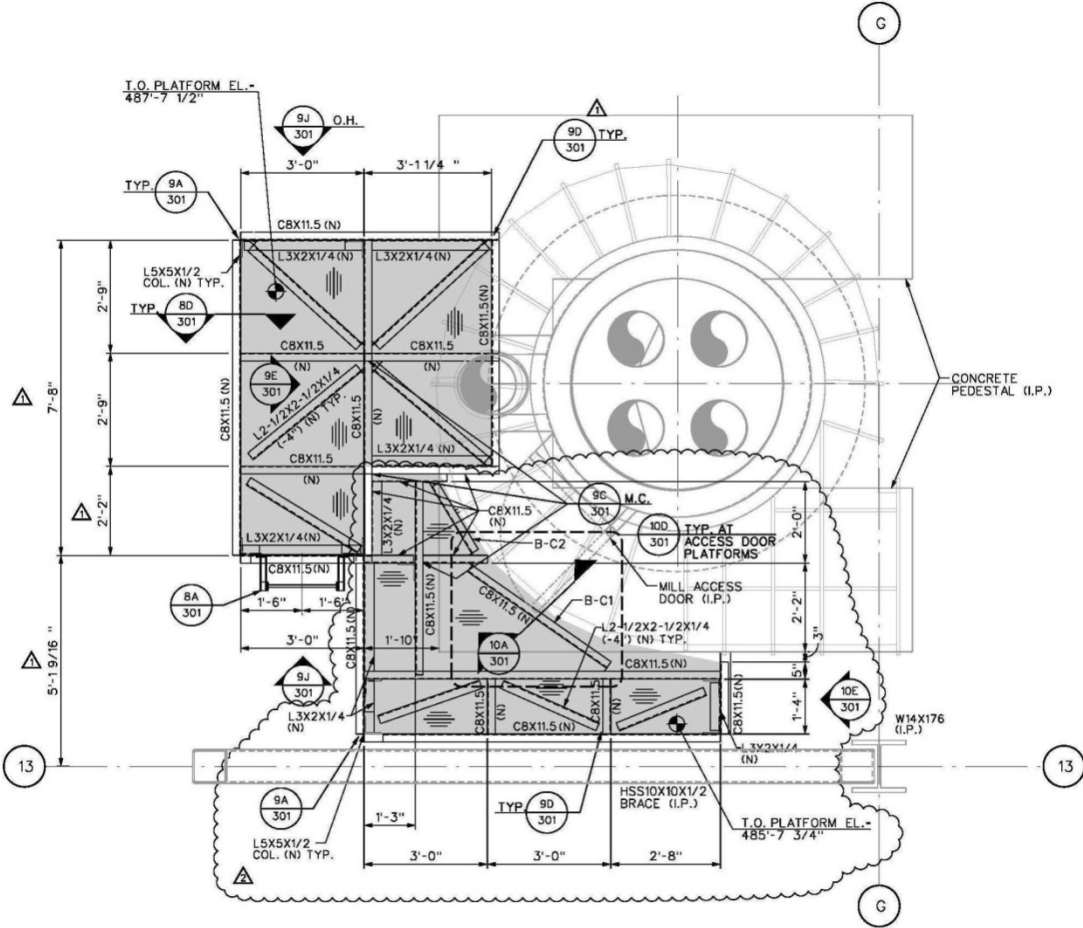
New components are added to the model.

# Using LiDAR Data to Create BIM



New components are compared to the unmodeled point cloud components for clash detection.

# Preparing 2D Drawings from BIM



PLATFORM FRAMING PLANS AT LIMESTONE MILL 5B-C

SCALE: 1/2"=1'-0"

# Reduce Construction Administration Time



Designs take into account the actual conditions, so uncertainty during construction is reduced.

# What Type of Project Warrants using LiDAR?

---

- ❑ Inaccessible
  - ❑ Hazardous site conditions
  - ❑ Complex geometry
  - ❑ Potential clash conditions
  - ❑ No existing drawings
  - ❑ Poor quality existing drawings
-

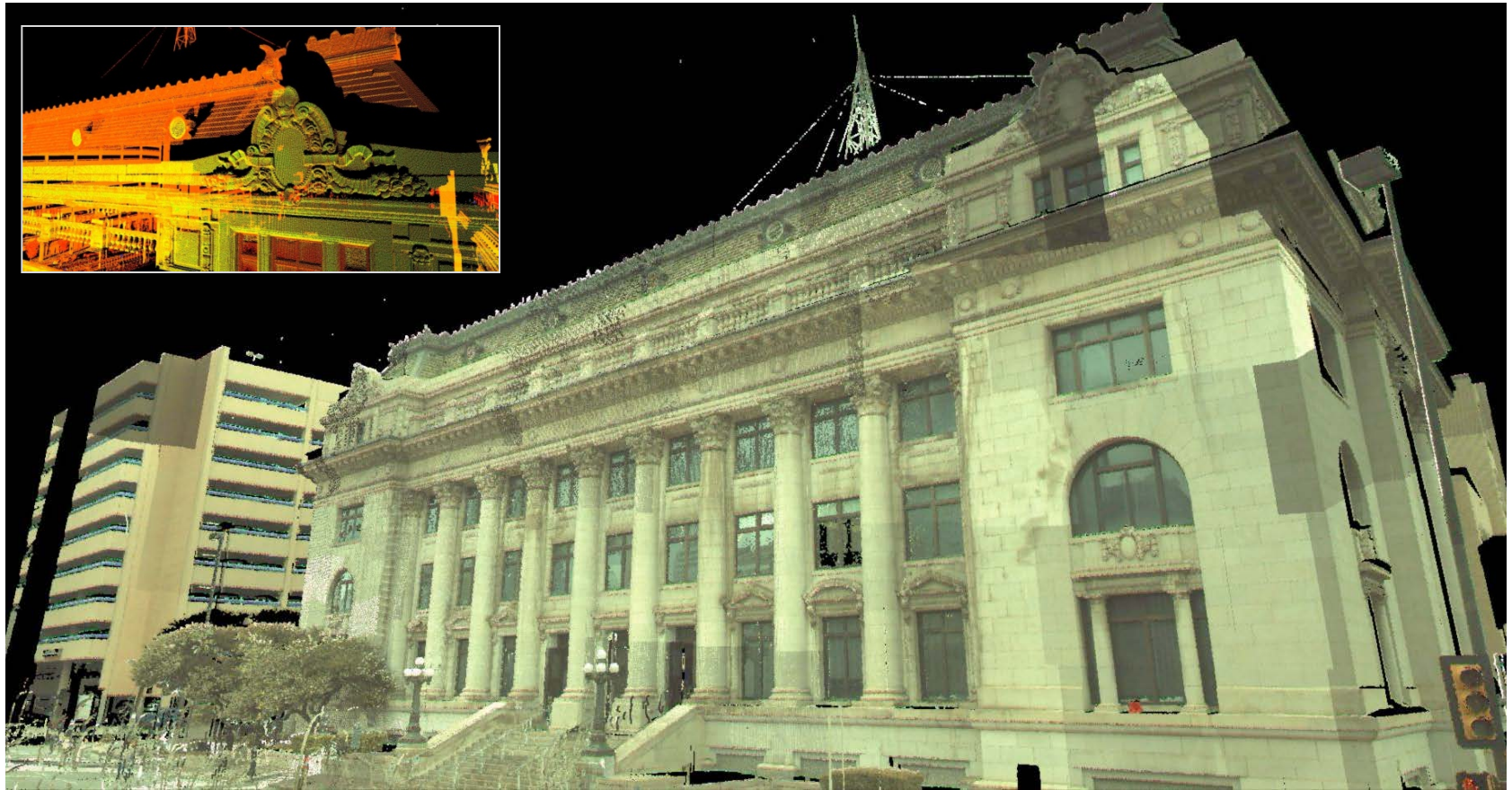
# Architectural Applications for LiDAR

---

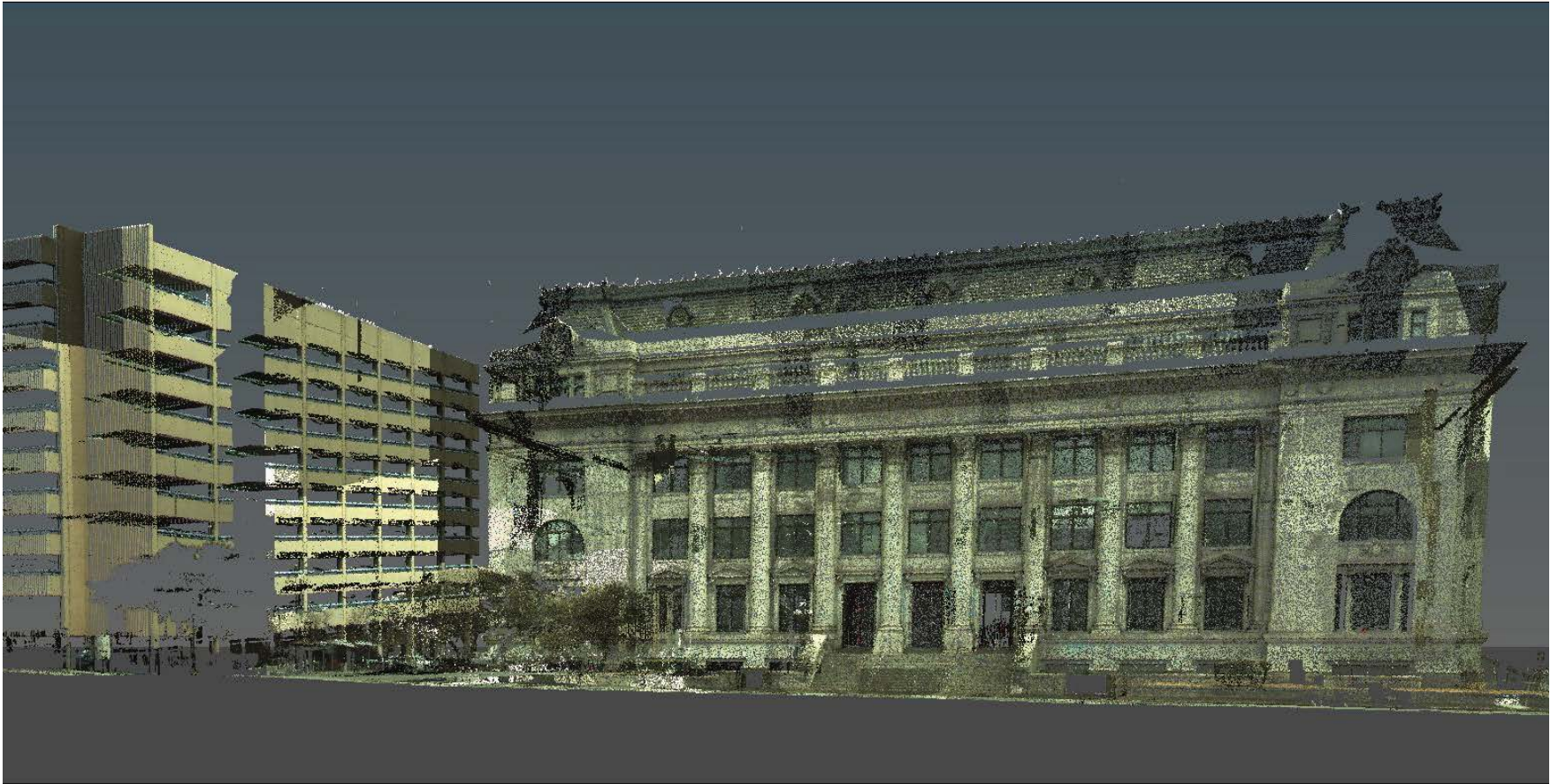
- Historic preservation/historical adaptation projects
  - Renovations (interior and/or exterior)
  - Creating 3D models of existing buildings
  - Record 3D models or drawings
-



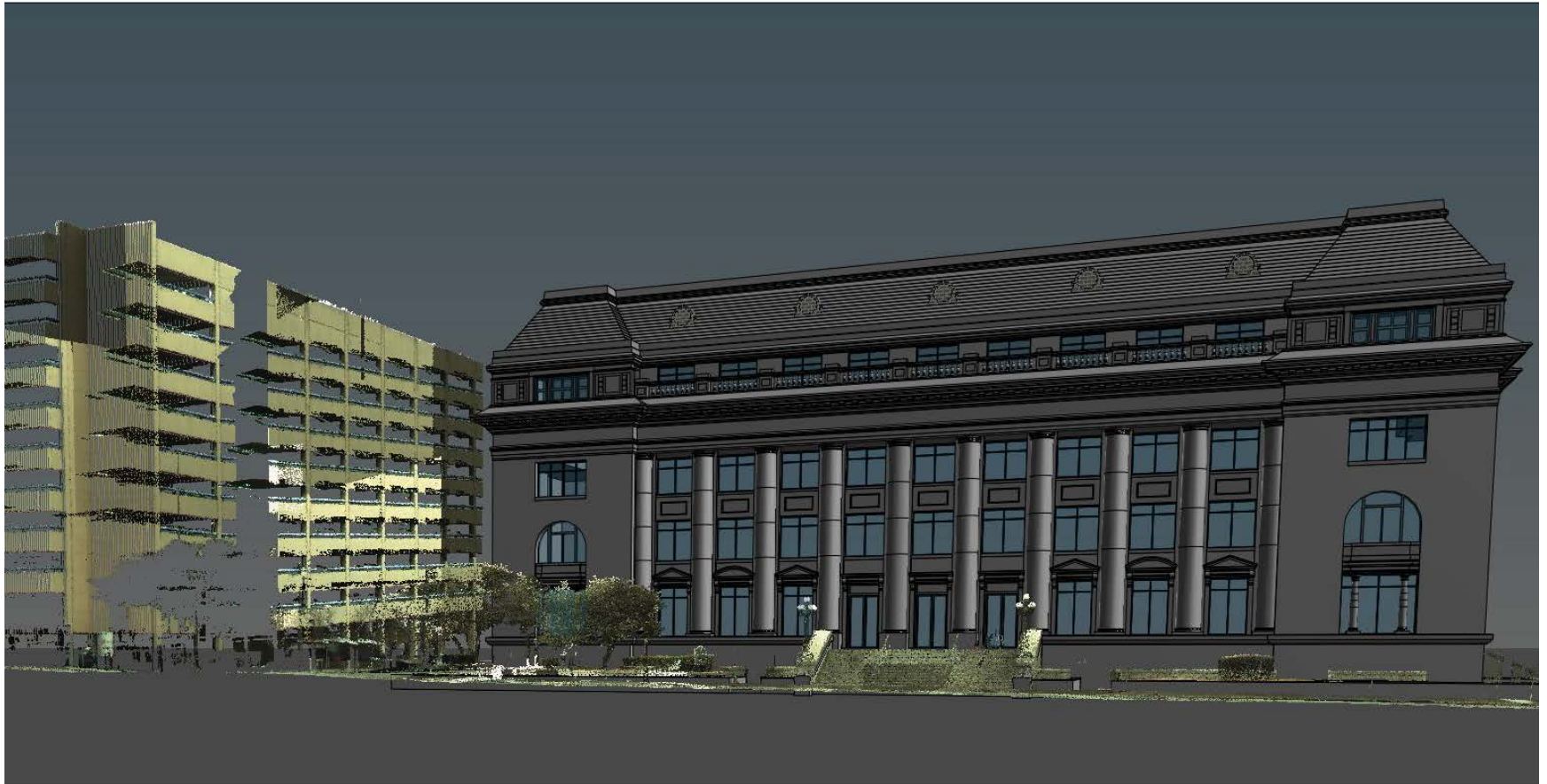
# Historic Structure



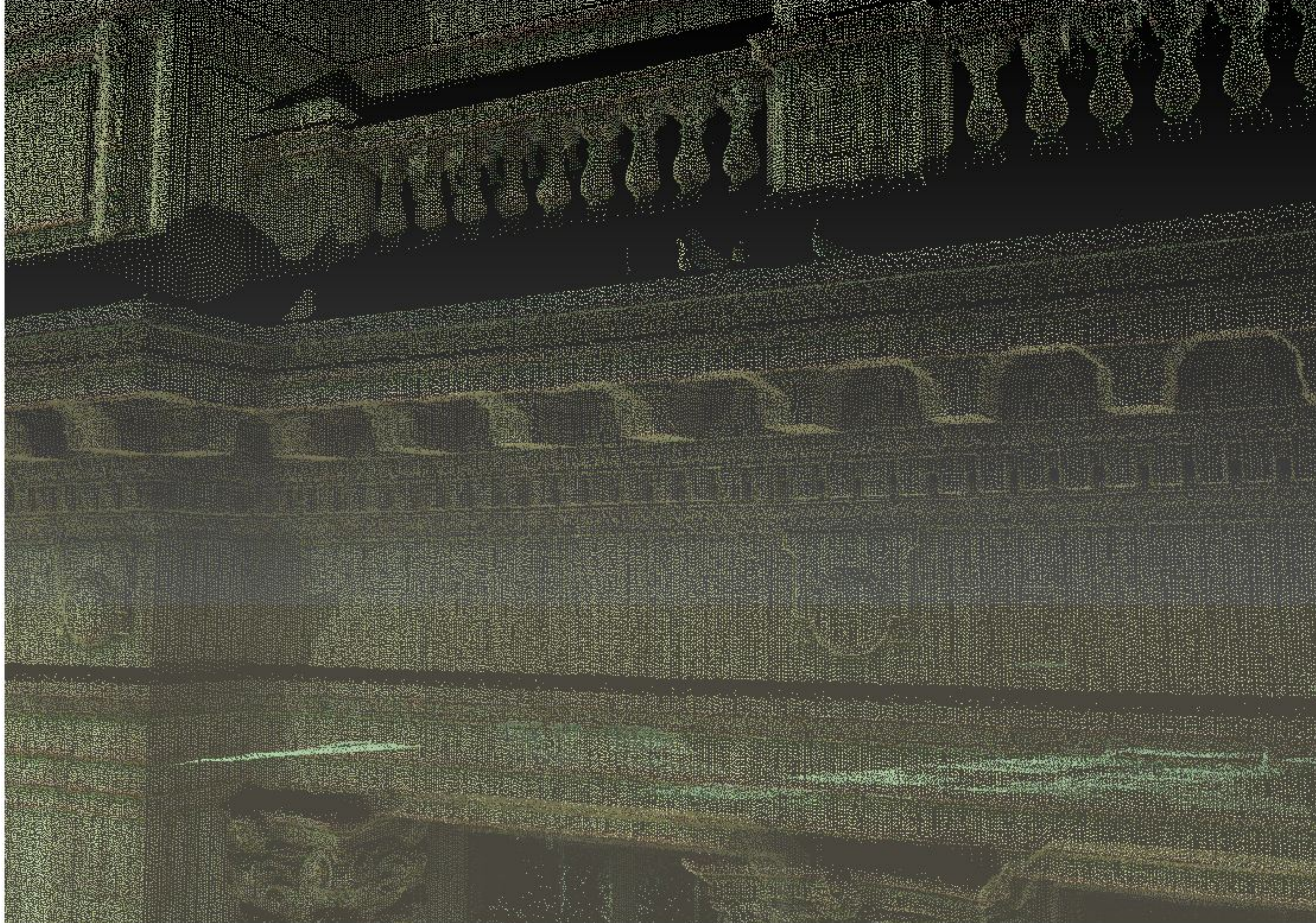
# Going from LiDAR to BIM



# Going from LiDAR to BIM

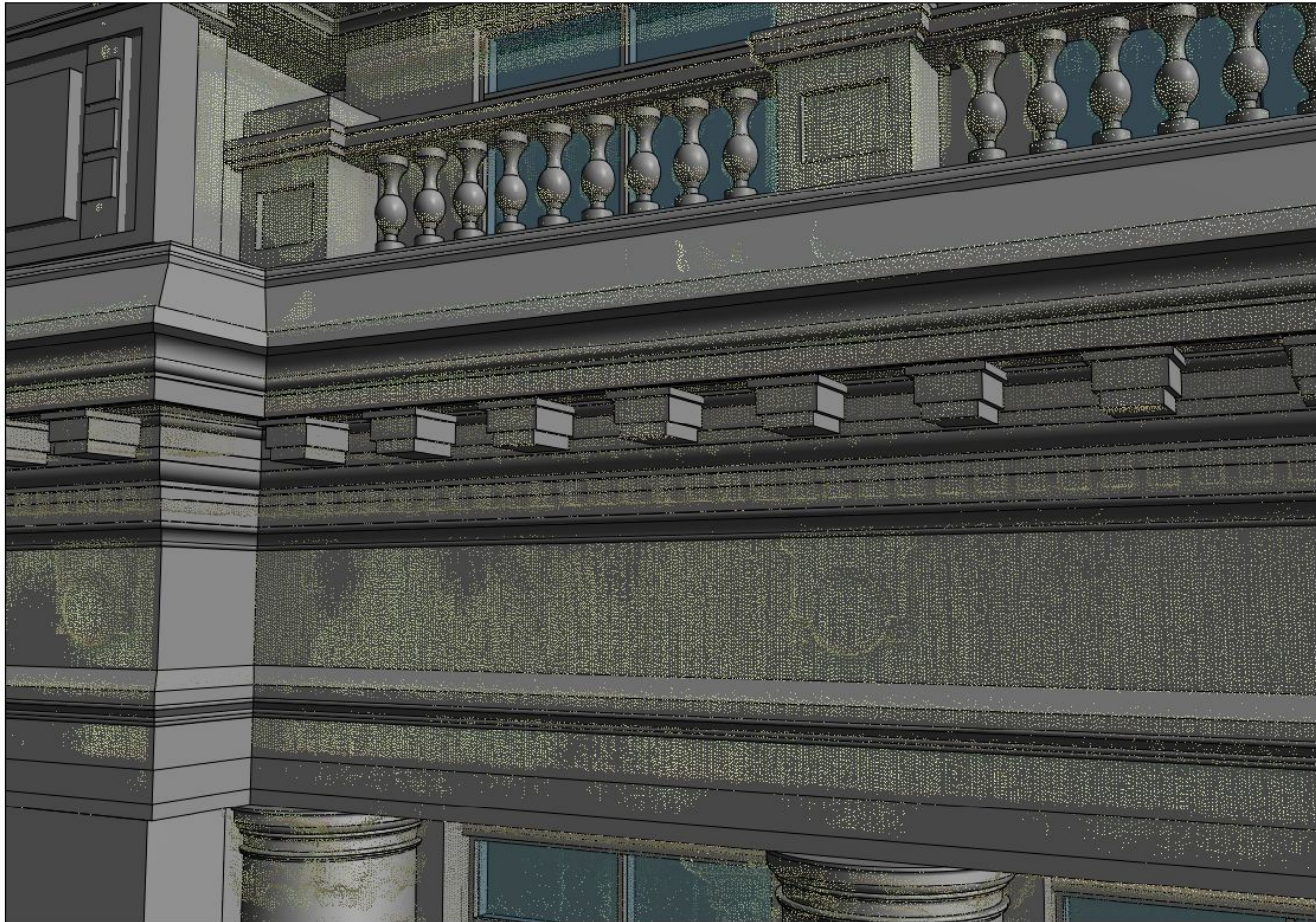


# Going from LiDAR to BIM: Capturing Detailed Information from a Distance



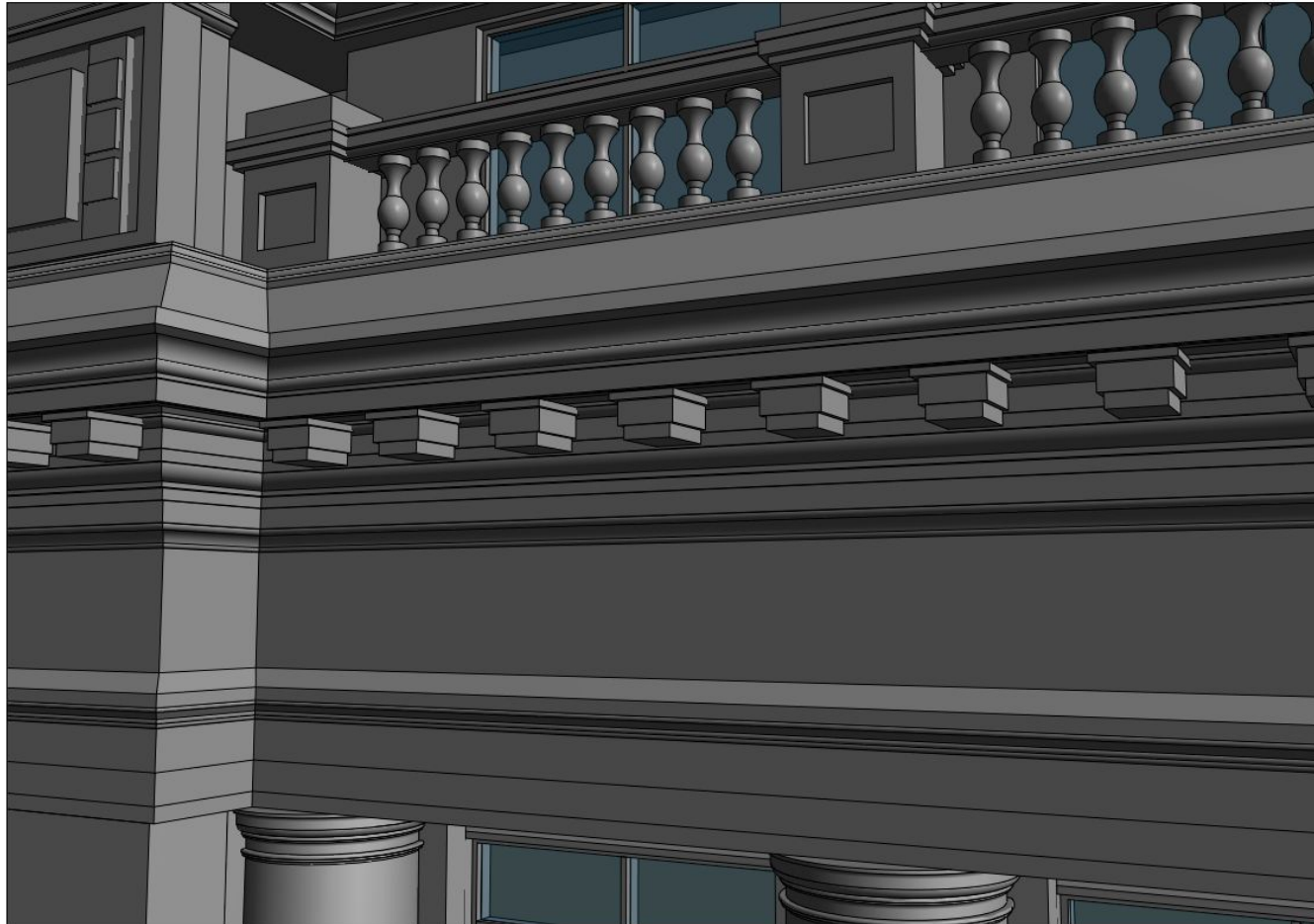
Scan

# Going from LiDAR to BIM: Capturing Detailed Information from a Distance



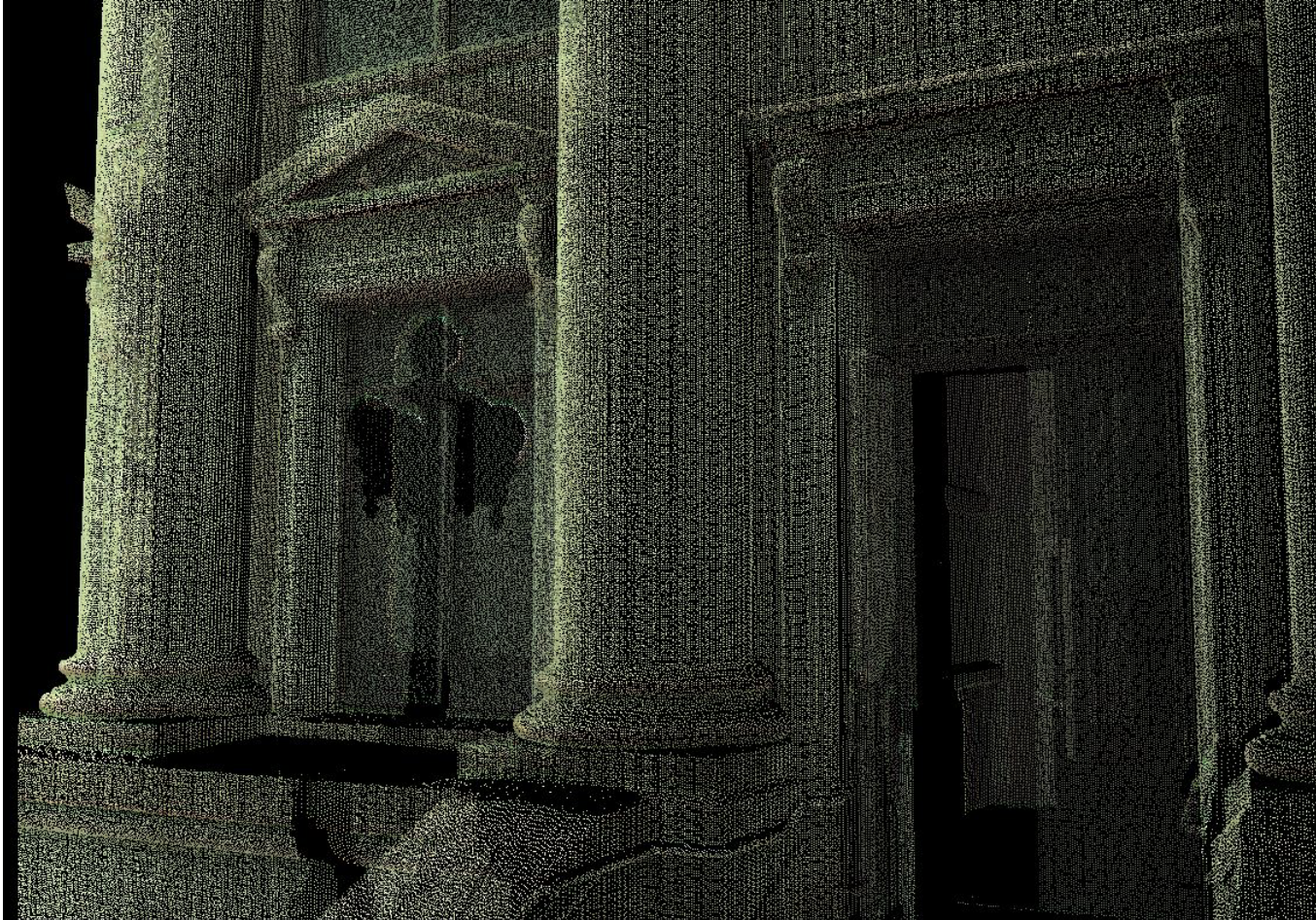
Model from scan

# Going from LiDAR to BIM: Capturing Detailed Information from a Distance



Model

# Going from LiDAR to BIM: Quickly Capturing Intricate Detail



Scan

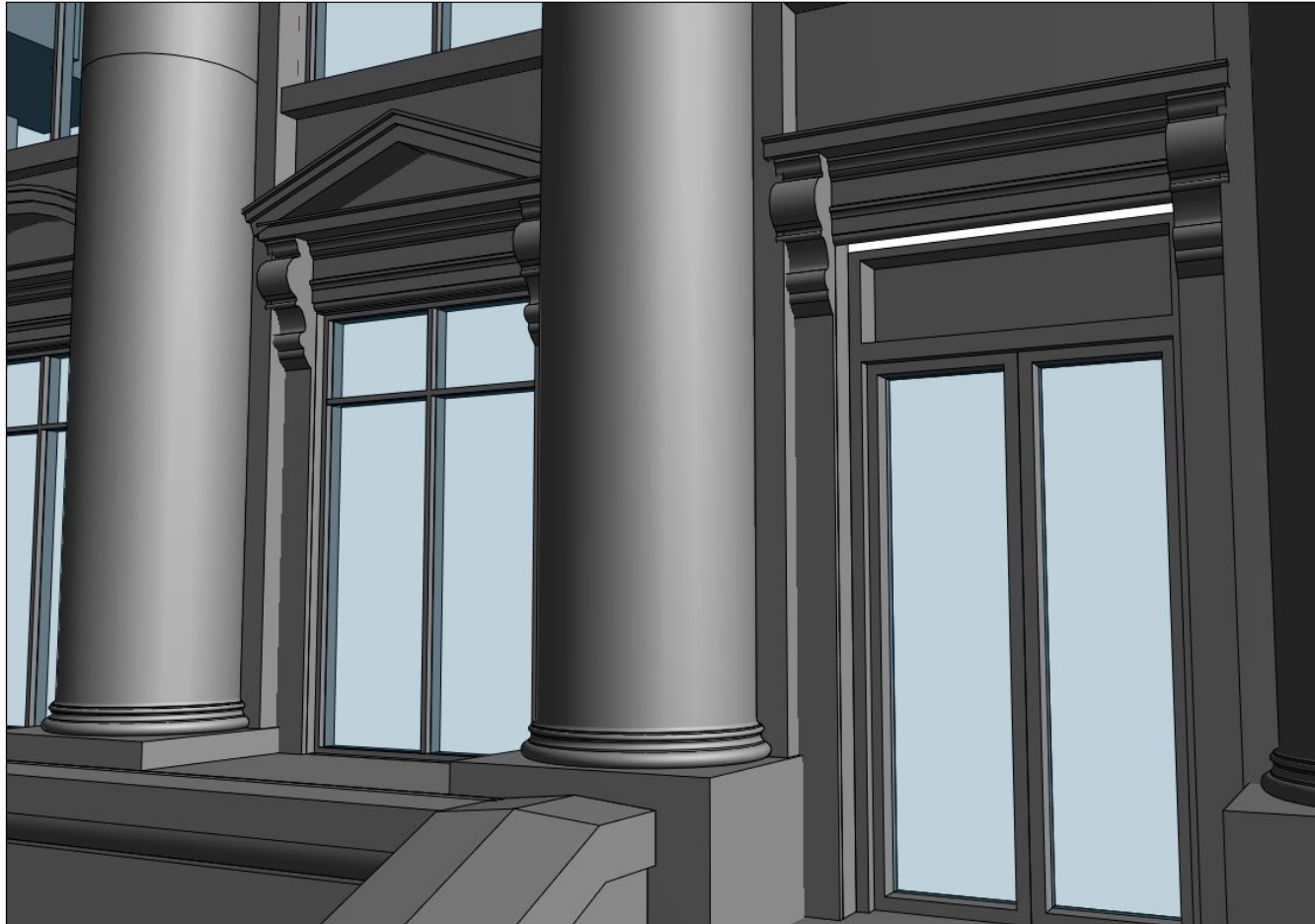
# Going from LiDAR to BIM: Quickly Capturing Intricate Detail



Model from scan

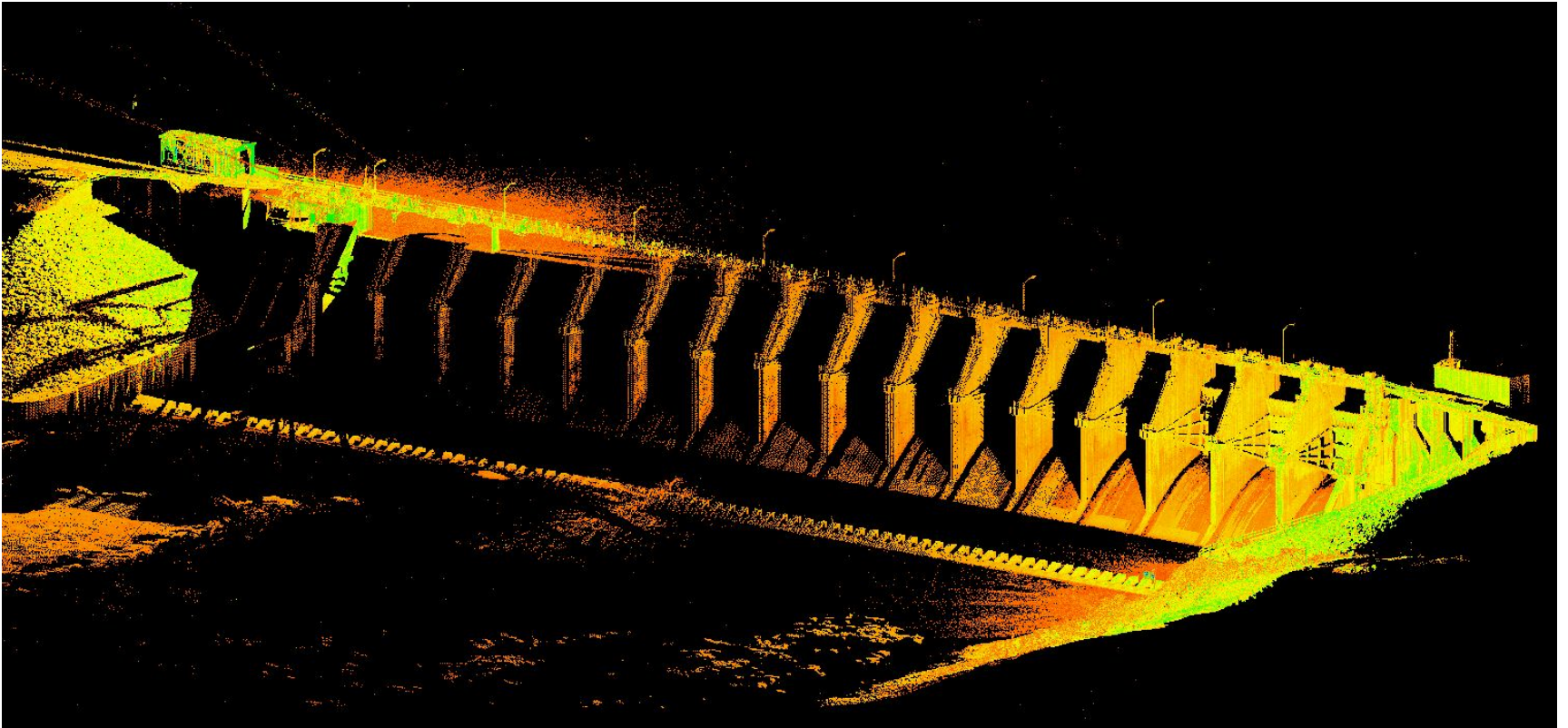


# Going from LiDAR to BIM: Quickly Capturing Intricate Detail



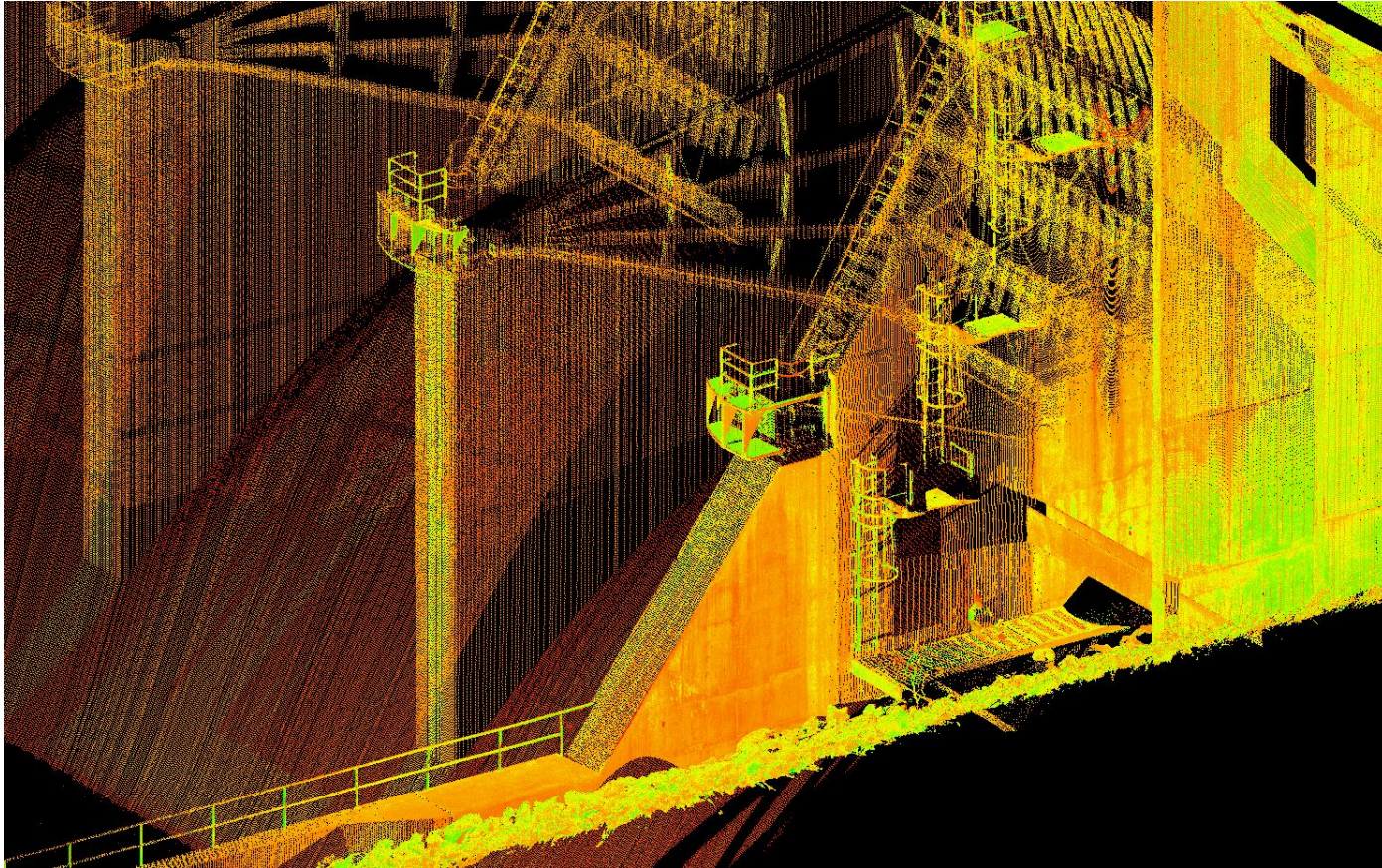
Model

# LiDAR Captures Vast Amounts of Data Safely and Quickly



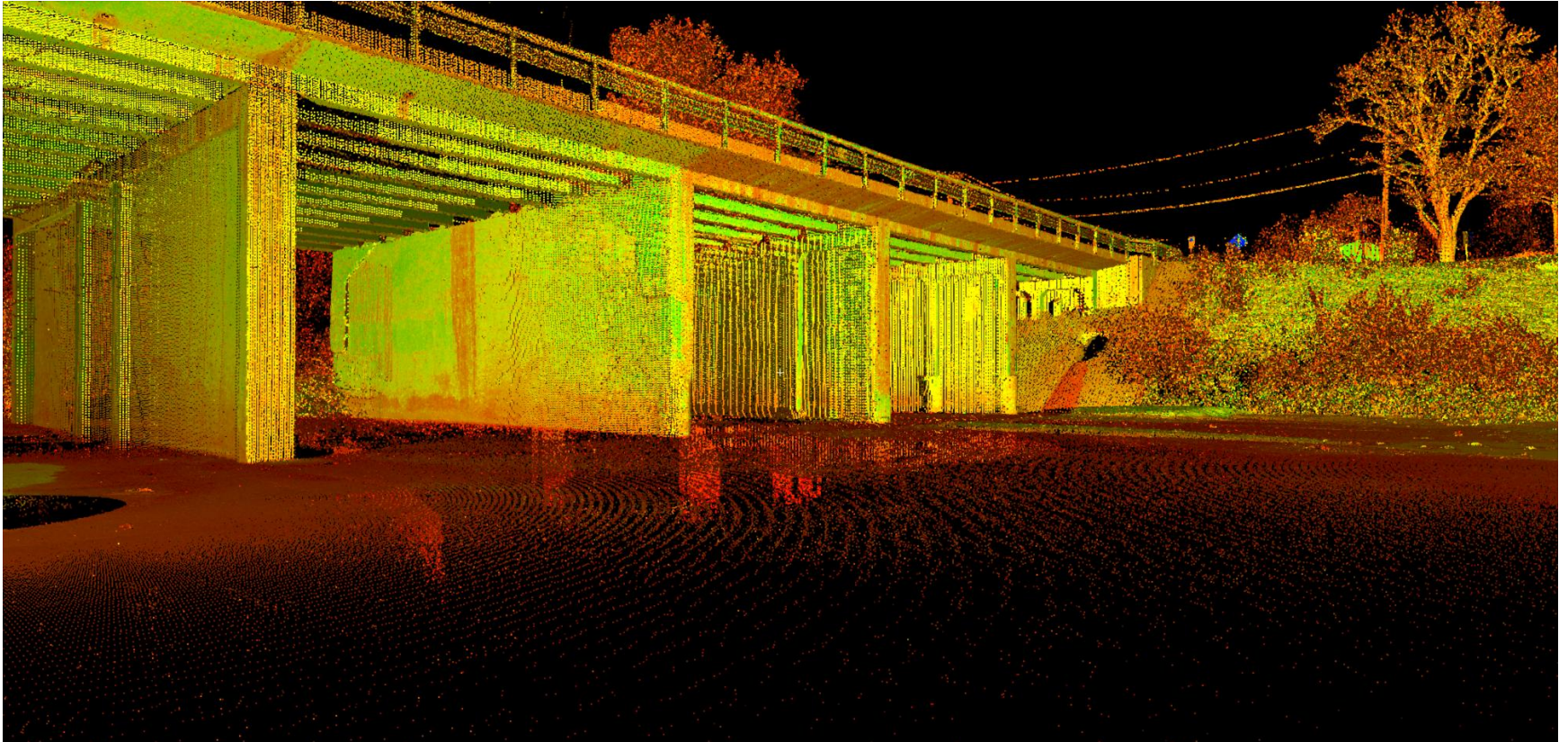
Limitation: LiDAR cannot scan below the water surface

# LiDAR Captures Vast Amounts of Data Safely and Quickly



Rip-rap slope adjacent to spillway scanned  
without walking across rocks.

# LiDAR: A Safer Way to Measure



The majority of a bridge can be documented from the banks rather than from a boat or scaffolding.

# Benefits of using LiDAR

---

- Millions of highly accurate points ready to be modeled (relative accuracy is  $\frac{1}{4}$  in at 500 ft)
  - Measuring from safer areas of the facility
  - Reduction in return field trips for additional measurements
  - Point cloud data can be imported and modeled in 3D software
-



# Mobile Apps

---

# Tablet Tasks

---

- Observation Reports
  - Condition Assessments
  - Video Conference/Mobile Meetings
  - Presentations/Client Meetings
  - Reference Material
-

# Applications

- PDF Annotation
- Photo Annotation
- Photo to PDF Conversion
- SD Card w/ Wireless Transfer
- Word Processor
- Cloud-based Document Editor
- Data Presentation Tool
- Online Meeting & Conference Calls
- File Sharing/Access
- Remote Desktop/VPN Connection
- 2D & 3D Model Viewer
- Model Visualization

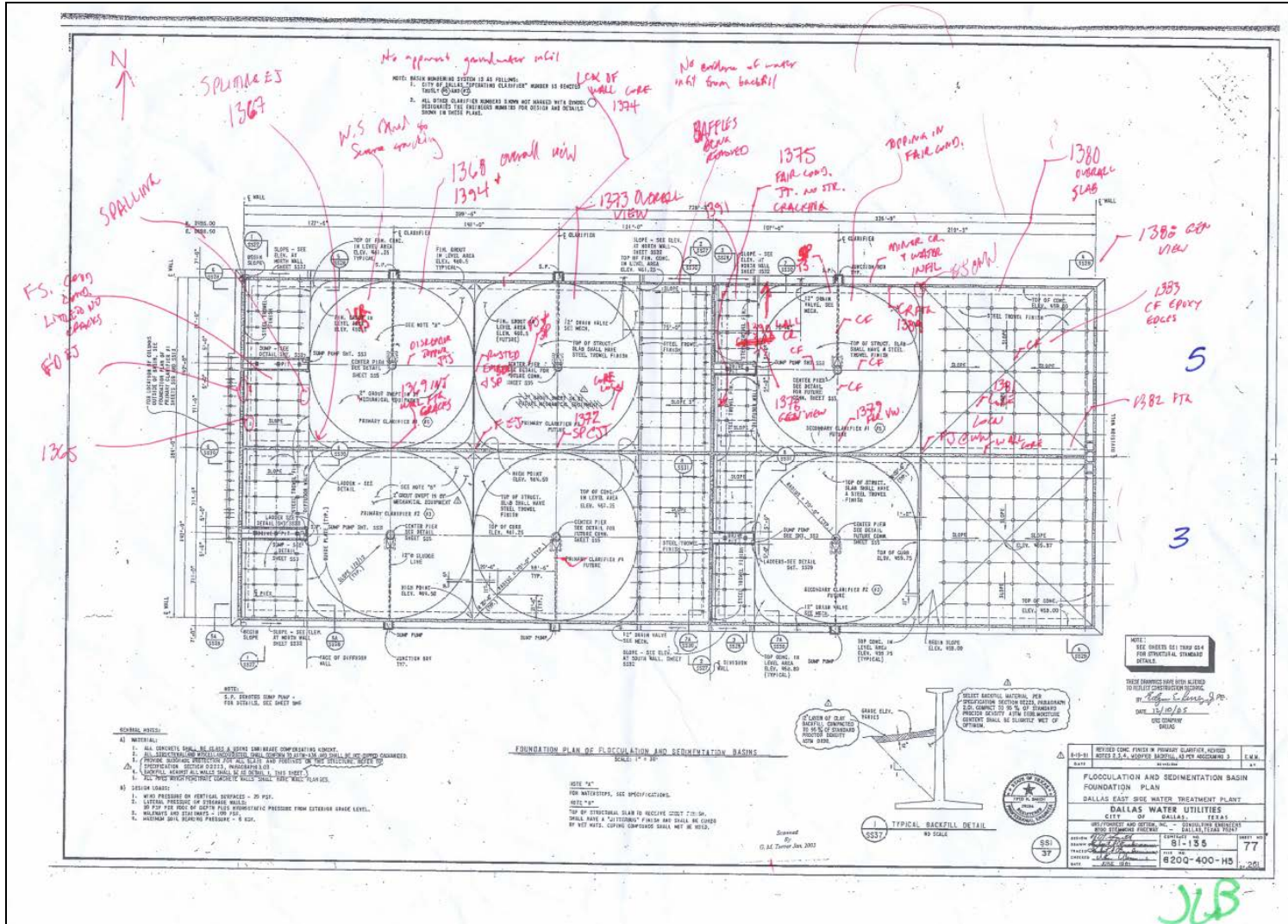


# PDF Annotation

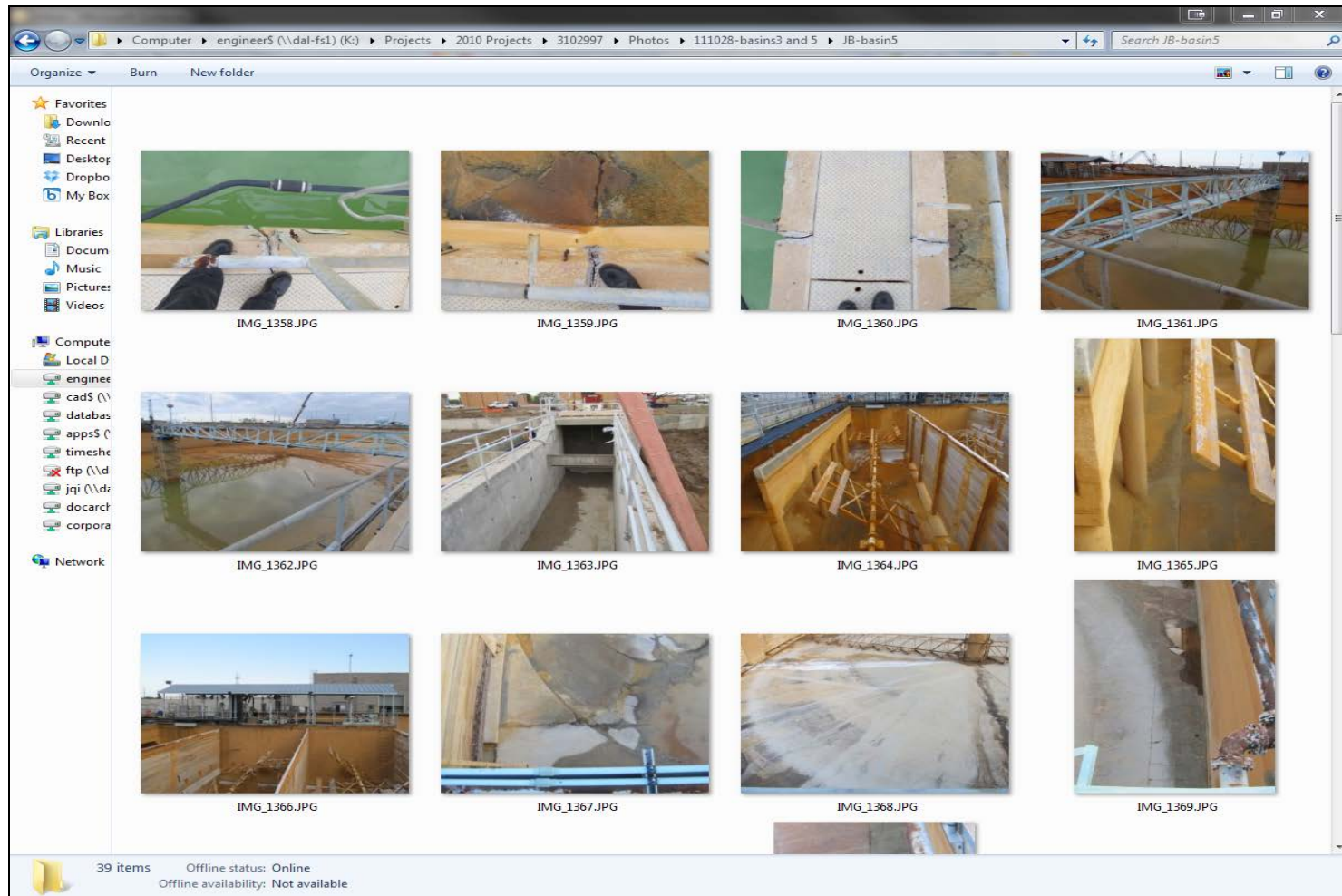
---

- Allows markup of PDF, word processor and data presentation files
  - Photo, video, audio, comments, markups
  - Cloud-based file sharing compatible
  - Email files of 8 MB or less
-

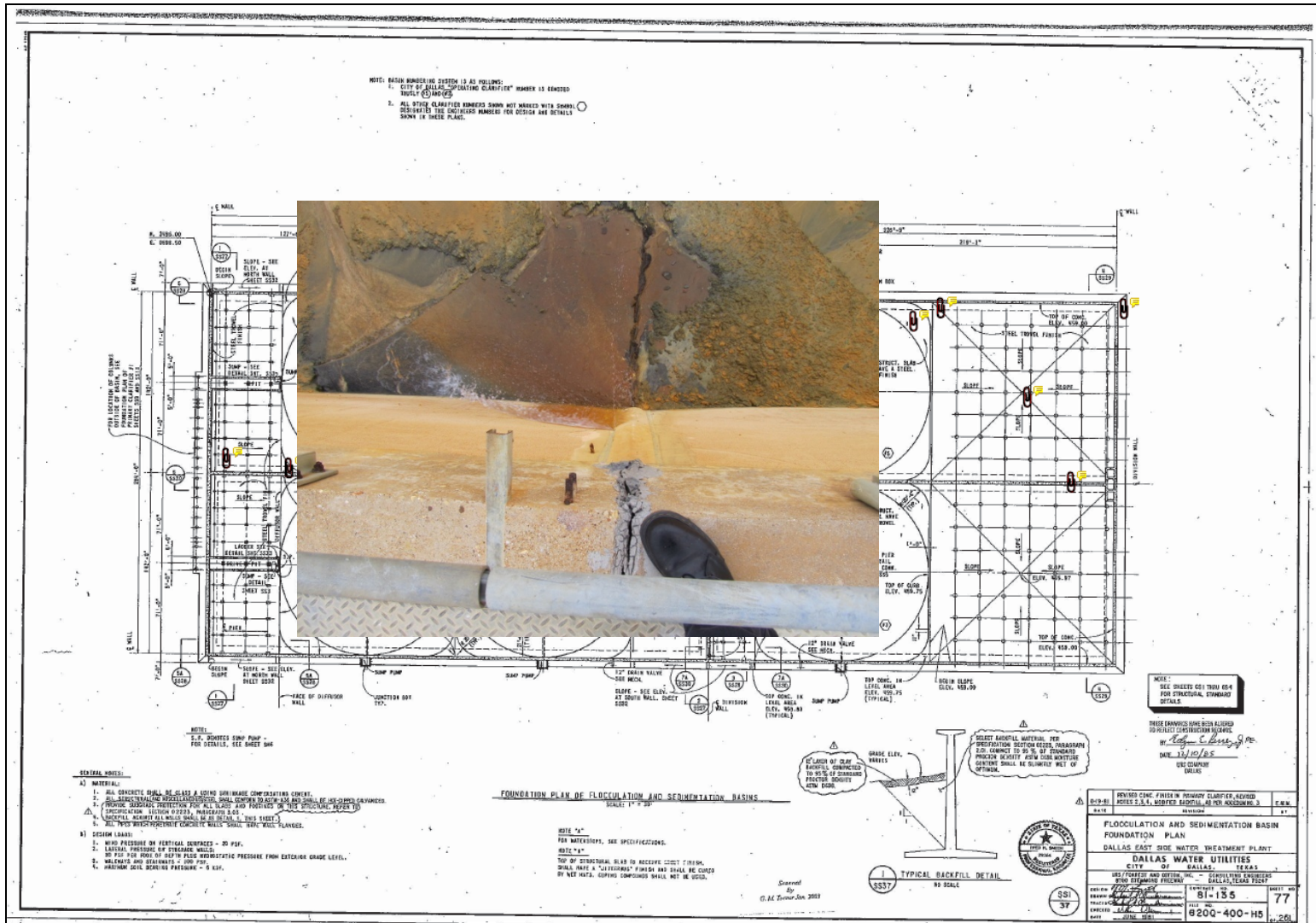
# PDF Annotation Example - Before



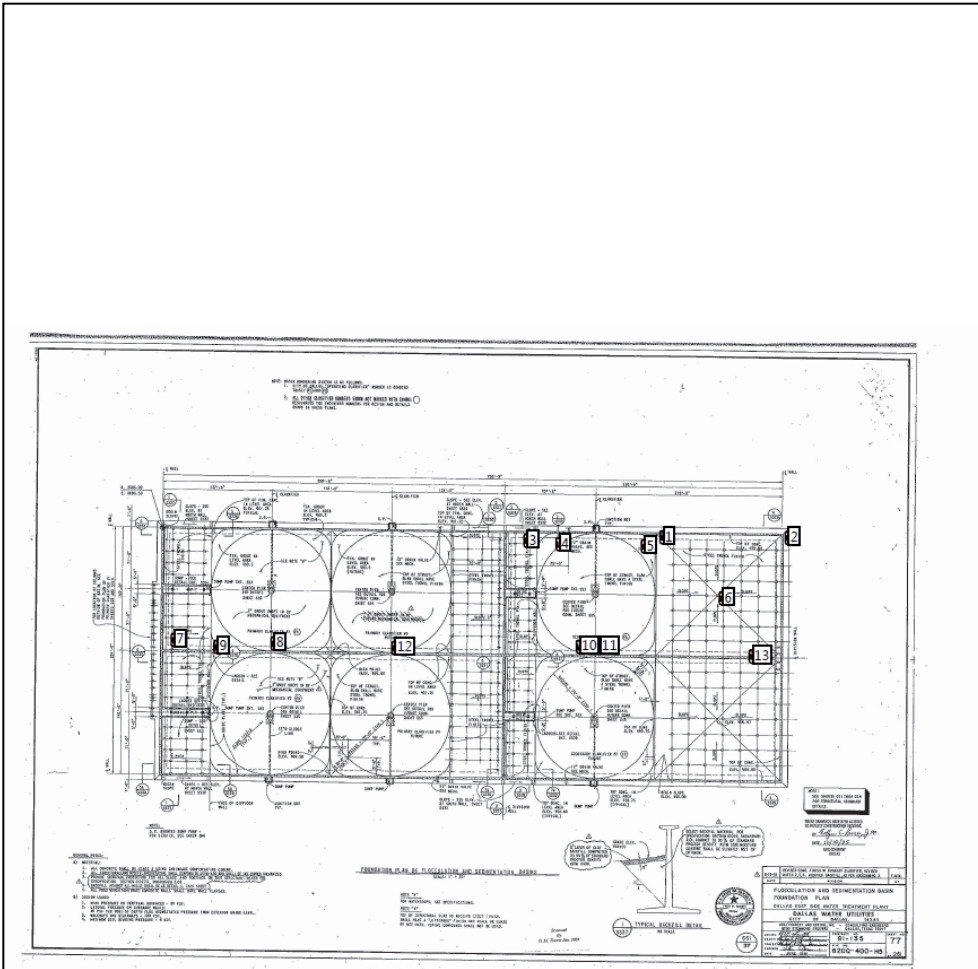
# PDF Annotation Example - Before



# PDF Annotation Example - After



# PDF Annotation Example - After



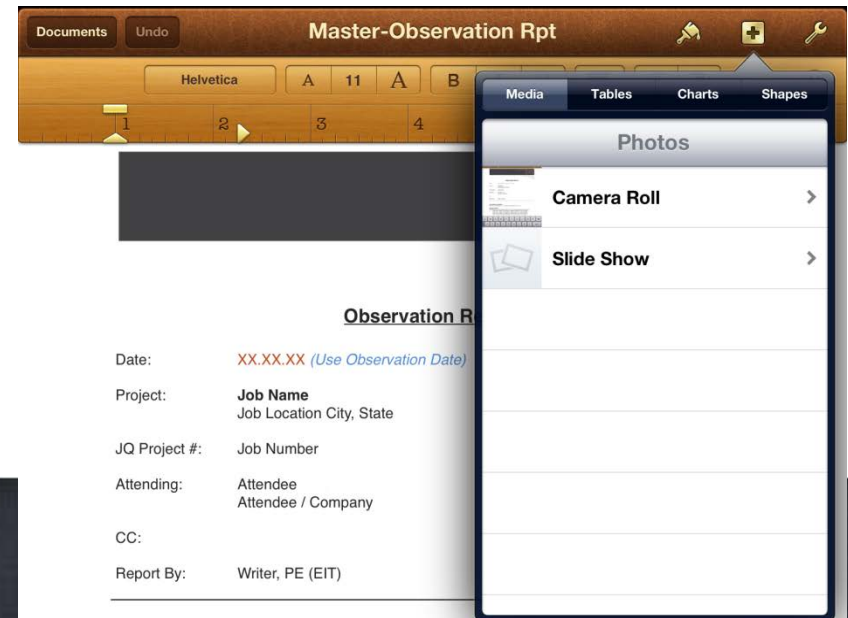
## Summary of Comments on DWU Eastside - CONTR-1981-135.pdf

Page: 83

Number	Author	Subject	Date
Number: 1 IMG_1380.JPG	jbronstad	File Attachment	10/10/2012 1:35:13 PM
Number: 2 IMG_1388.JPG	jbronstad	File Attachment	10/10/2012 1:35:09 PM
Number: 3 IMG_1391.JPG	jbronstad	File Attachment	10/10/2012 1:36:14 PM
Number: 4 IMG_1390.JPG	jbronstad	File Attachment	10/10/2012 1:35:39 PM
Number: 5 IMG_1389.JPG	jbronstad	File Attachment	10/10/2012 1:35:11 PM
Number: 6 IMG_1383.JPG	jbronstad	File Attachment	10/10/2012 1:35:07 PM
Number: 7 IMG_1365.JPG	jbronstad	File Attachment	10/10/2012 1:37:52 PM
Number: 8 IMG_1369.JPG	jbronstad	File Attachment	10/10/2012 1:37:16 PM
Number: 9 IMG_1367.JPG	jbronstad	File Attachment	10/10/2012 1:37:35 PM
Number: 10 IMG_1378.JPG	jbronstad	File Attachment	10/10/2012 1:35:00 PM
Number: 11 IMG_1379.JPG	jbronstad	File Attachment	10/10/2012 1:35:02 PM
Number: 12 IMG_1372.JPG	jbronstad	File Attachment	10/10/2012 1:36:52 PM
Number: 13 IMG_1382.JPG	jbronstad	File Attachment	10/10/2012 1:35:04 PM

# Word Processor

- Create new documents
- Preload standard forms
- Email, .doc, .pdf export



## Forms



Master-Observation Rpt

Sep 24, 2012, 4:48 PM



Final Letterhead

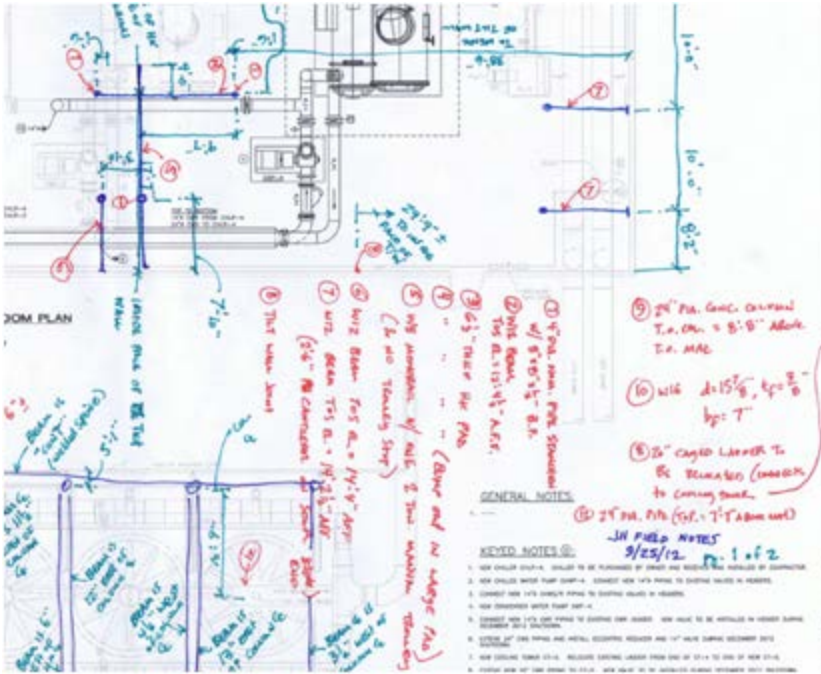
Sep 24, 2012, 4:31 PM

**Job / Weather Conditions:**  
Partly Sunny, 90 degrees +/-, windy, and no precipitation (Example)

- Progress of Work:**  
[Optional] State primary purpose of site visit, i.e. to review grade beams prior to pour...
- State various stages of completion for different portions or areas of project.
  - State various stages of completion for different portions or areas of project.
  - State various stages of completion for different portions or areas of project.
  - Try to include an overall photograph of the project as seen in Photograph 1.



# Photo Markup - Before



**TEXAS WOMAN'S CHILLER CAPACITY UPC**  
 TWU PROJECT #: DE-11  
 DENTON, TEX

**PRELIMINARY**

**MECHANICAL**

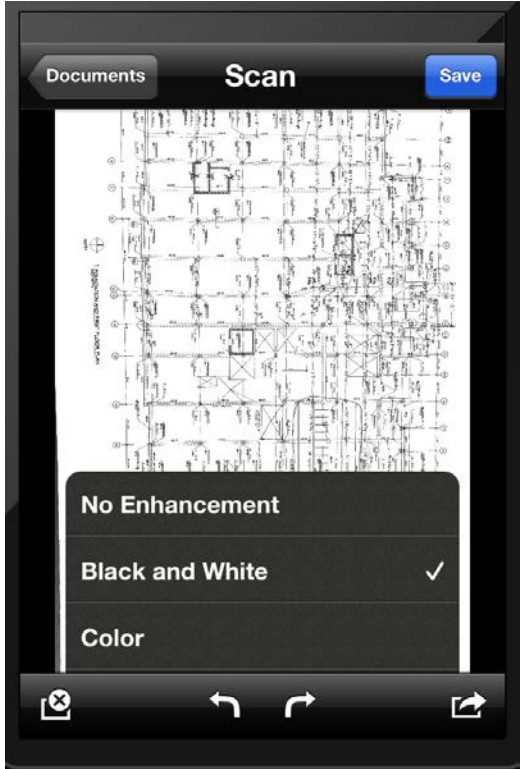
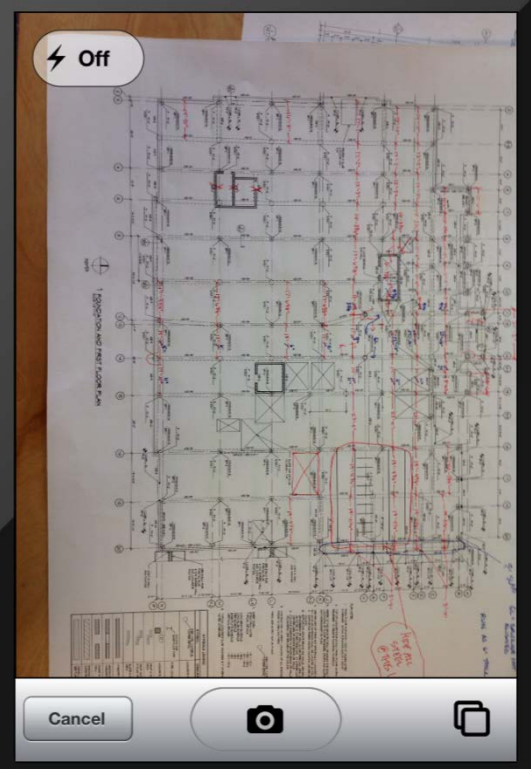


# Photo Markup - After





# Photo to PDF Conversion



# SD Card with Wireless Transfer

- ❑ SD card with built-in Wi-Fi
- ❑ Photos from existing cameras instantly uploaded to tablet
- ❑ If Wi-Fi not available, app turns tablet data plan into Wi-Fi for photo transfer only
- ❑ Greatly decreases camera and tablet battery life





# Data Presentation Tool

- Upload data presentation to account
- Connect tablet to TV/projector
- Touch slide on tablet screen for digital laser pointer
- Use smart phone as remote
- Data presentation also possible via PDF viewer app



# Online Meeting and Conference Calls

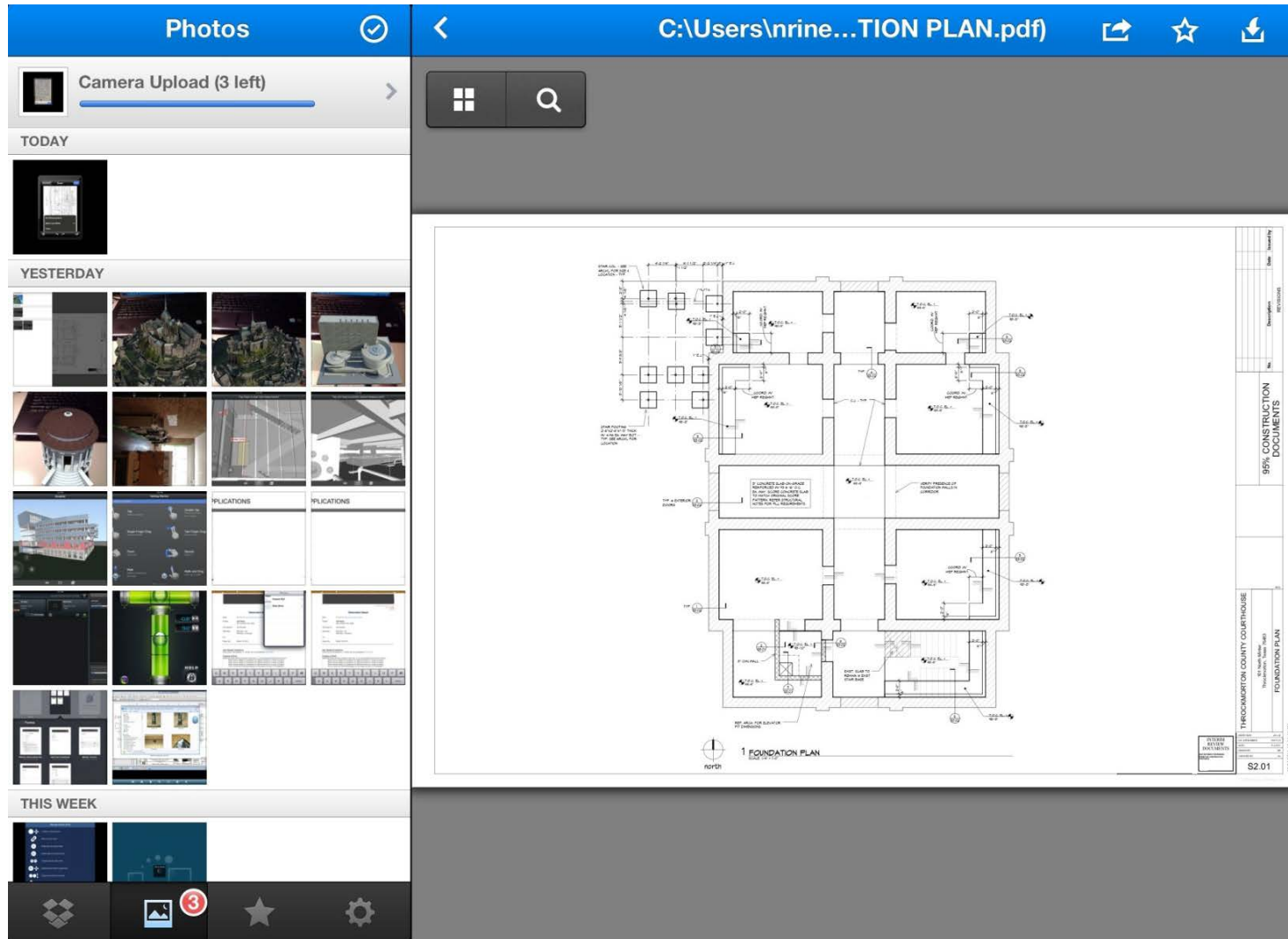
- ❑ Field correspondence, attend online meetings, and conference calls over Wi-Fi or data plan
- ❑ Host meetings (Wi-Fi preferred)
  - ❑ File sharing
  - ❑ View web browser
  - ❑ Markup on whiteboard
- ❑ Free account to account phone calls
- ❑ Paid version
  - ❑ Unlimited calls to US and Canada
  - ❑ Group video calls
  - ❑ Group screen share

# File Sharing/Access

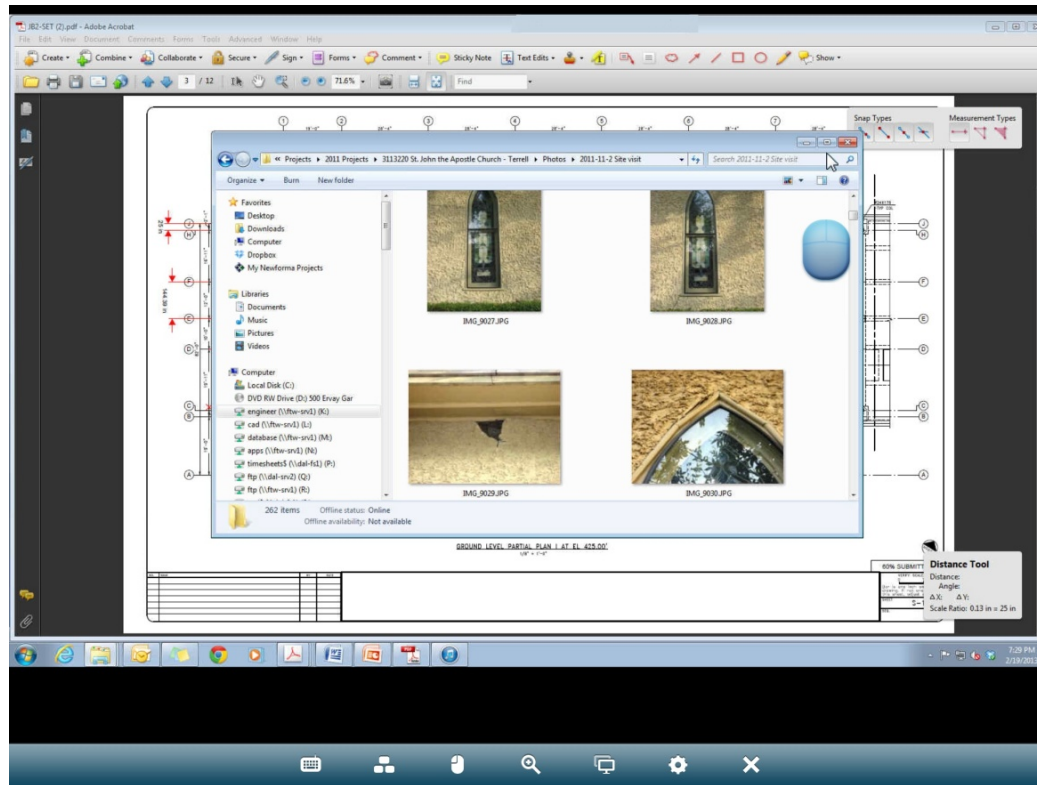
---

- ❑ Add file to file sharing folder on computer; accessible via app or website
  - ❑ Photos auto-upload from camera roll on tablet or smart phone
  - ❑ File-sharing folder can be on hard-drive or network drive, depending on app
-

# File Sharing/Access



# Remote Desktop/VPN Connection



- ❑ Free version allows remote access to desktop
- ❑ Paid version allows videos, remote sound, remote-to-local printing, file sharing



# 2D & 3D Model Viewer

---

- View and markup 2D and 3D models
  - Upload model files to website
  - Model markups tracked for easier coordination
  - Need internet connectivity (Wi-Fi or data plan)
-

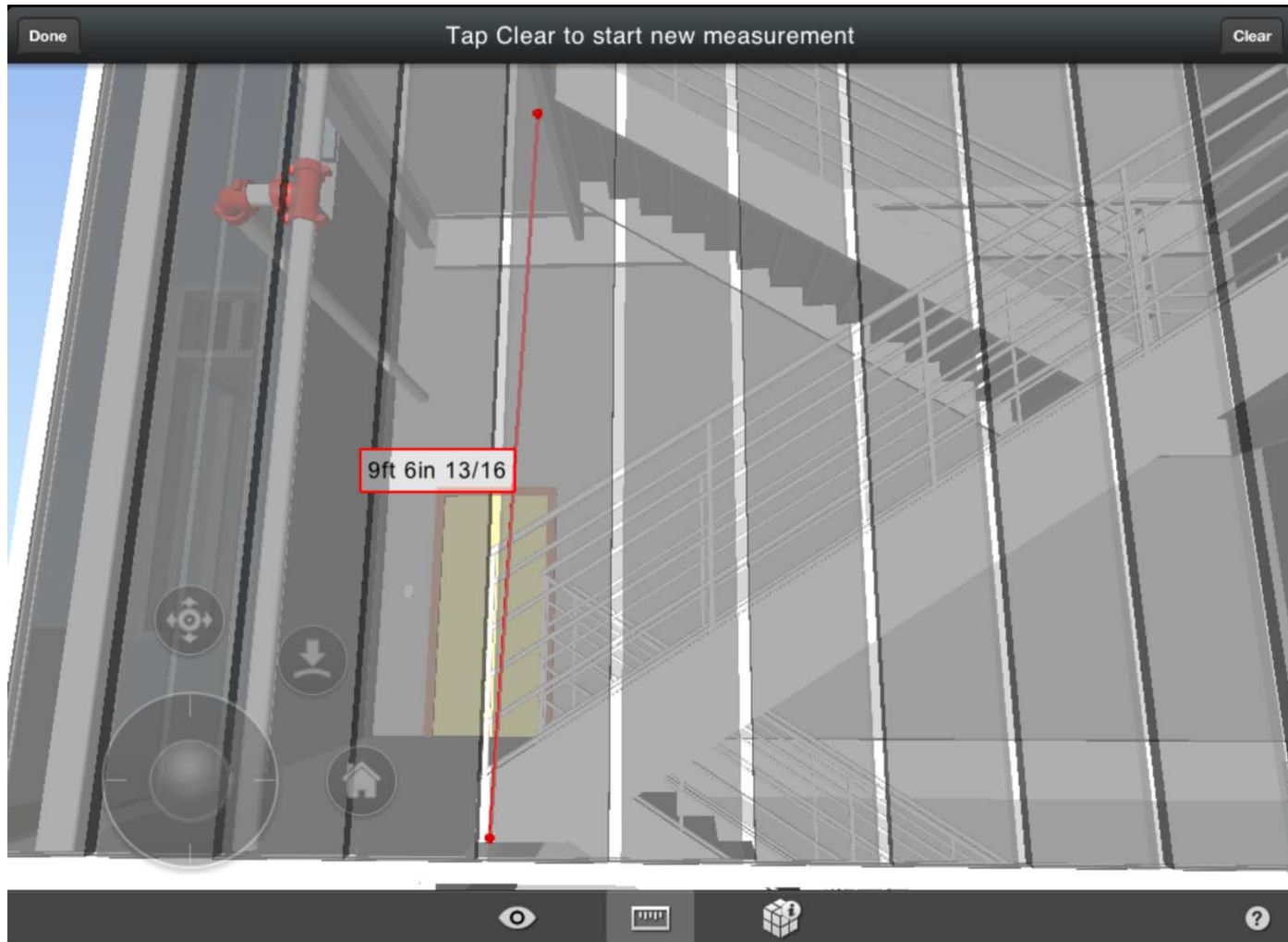
# 2D & 3D Model Viewer



# 2D & 3D Model Viewer



# 2D & 3D Model Viewer

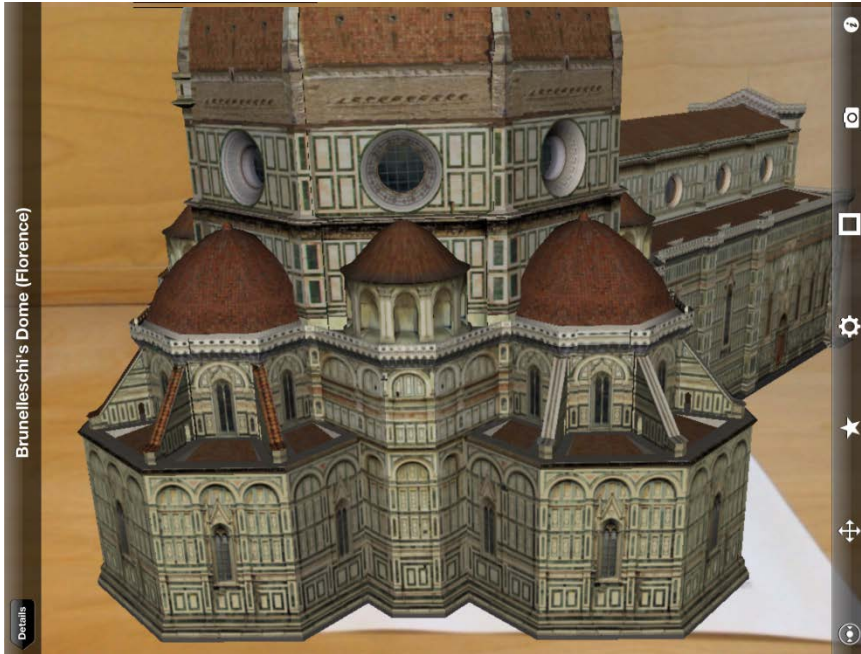


# Model Visualization

---

- ❑ Create model visualization file from Building Information Modeling (BIM) file
- ❑ Geolocate models
- ❑ Free viewer app
- ❑ Paid version for model creator

# Model Visualization



Questions?