

Project Management
in
Urban America



2016 Fall Convention | November 9-11 | Cleveland, Ohio

Never before in history has project management been so affected by outside influences.

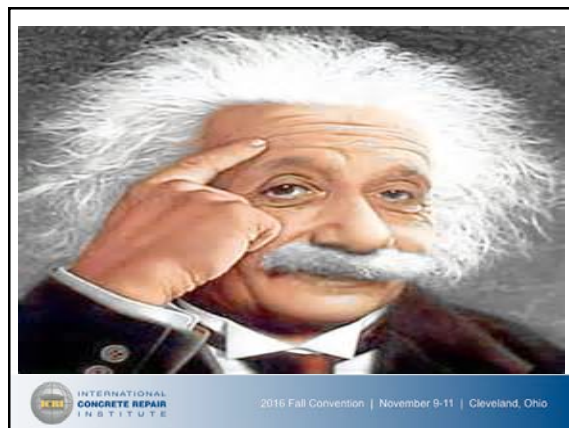


2016 Fall Convention | November 9-11 | Cleveland, Ohio

What are some pre-planning thoughts about challenges one might encounter with a new project?



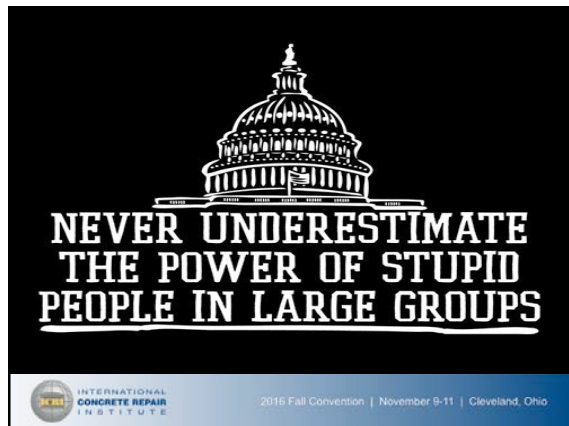
2016 Fall Convention | November 9-11 | Cleveland, Ohio



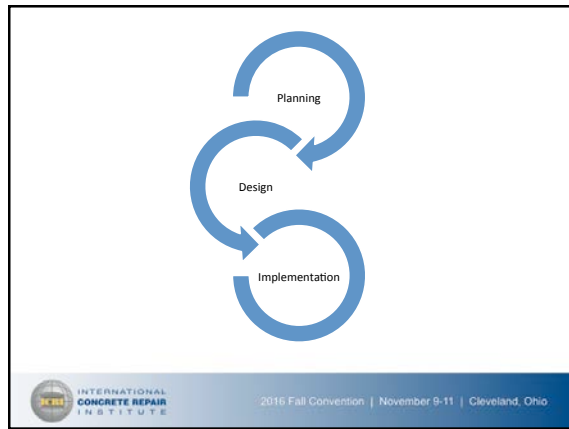
2016 Fall Convention | November 9-11 | Cleveland, Ohio

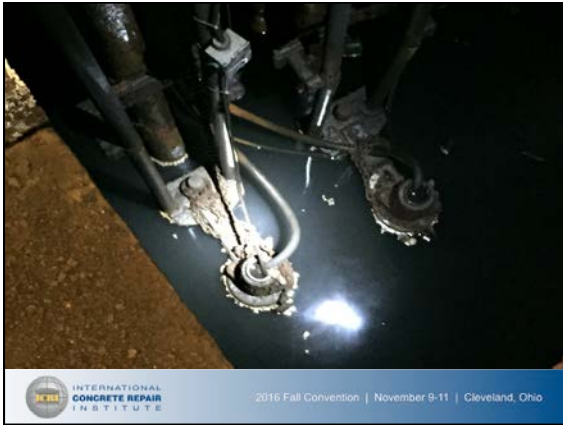


2016 Fall Convention | November 9-11 | Cleveland, Ohio



2016 Fall Convention | November 9-11 | Cleveland, Ohio





Planning

Budget

- a.) Material / Supplies
- b.) Wages / Benefits & Taxes
- c.) Production
- d.) Time Delays
- e.) Inflation and Escalation

INTERNATIONAL CONCRETE REPAIR INSTITUTE
2016 Fall Convention | November 9-11 | Cleveland, Ohio

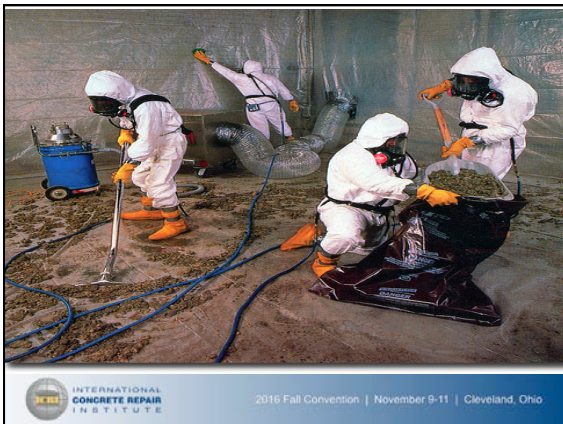
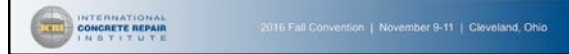




Social Challenges

Project Landscape

- a.) Work Force Competency
- b.) Bargaining Agreements
- c.) Product Supply
- d.) Governmental Regulations
- e.) Work Dictated by Weather



Environmental Concerns

One World

- a.) Noise
- b.) Sedimentation and Erosion Control
- c.) Wetlands / Parklands
- d.) Lead and Asbestos Abatement
- e.) Contaminated / Toxic Waste



2016 Fall Convention | November 9-11 | Cleveland, Ohio



2016 Fall Convention | November 9-11 | Cleveland, Ohio



2016 Fall Convention | November 9-11 | Cleveland, Ohio



2016 Fall Convention | November 9-11 | Cleveland, Ohio



2016 Fall Convention | November 9-11 | Cleveland, Ohio

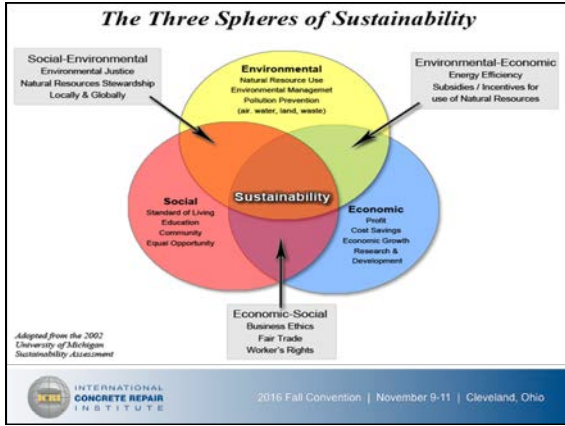
Public Policy

Socio-Political Landscape

- a. Public Involvement in Planning
- b.) Local Civic and Community Groups
- c.) Mayor and County Executive Office
- d.) City and County Council
- e.) Special Interest Groups
- f.) NIMBY (Not In My Back Yard)



2016 Fall Convention | November 9-11 | Cleveland, Ohio



Sustainability

Providing the needs of the present without compromising the needs of the future

- a.) Construction Materials
- b.) Waste Management
- c.) Energy Efficiency
- d.) Hydraulic Efficiency

INTERNATIONAL CONCRETE REPAIR INSTITUTE
2016 Fall Convention | November 9-11 | Cleveland, Ohio

Continued Maintenance

Keeping the finished product finished

- a.) What are potential on-going concerns ?
- b.) Corrosion – Erosion – Capital Controls

INTERNATIONAL CONCRETE REPAIR INSTITUTE
2016 Fall Convention | November 9-11 | Cleveland, Ohio



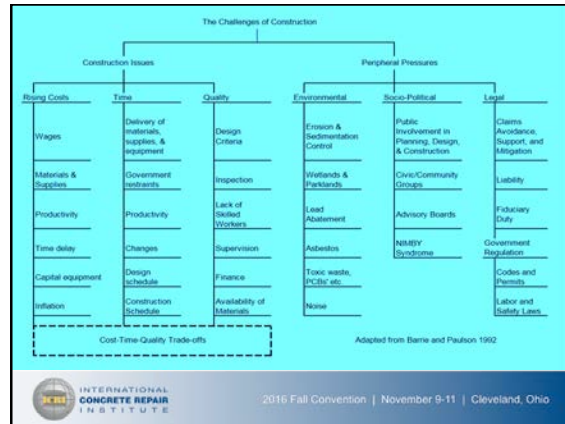
Organizational Leadership

- a.) Responsibility
- b.) Accountability
- c.) Respect
- d.) Support

Backing up your team



2016 Fall Convention | November 9-11 | Cleveland, Ohio



2016 Fall Convention | November 9-11 | Cleveland, Ohio



2016 Fall Convention | November 9-11 | Cleveland, Ohio

Let's Do Lunch



2016 Fall Convention | November 9-11 | Cleveland, Ohio