

STATE OF THE INSTITUTE

BY KELLY M. PAGE, ICRI EXECUTIVE DIRECTOR



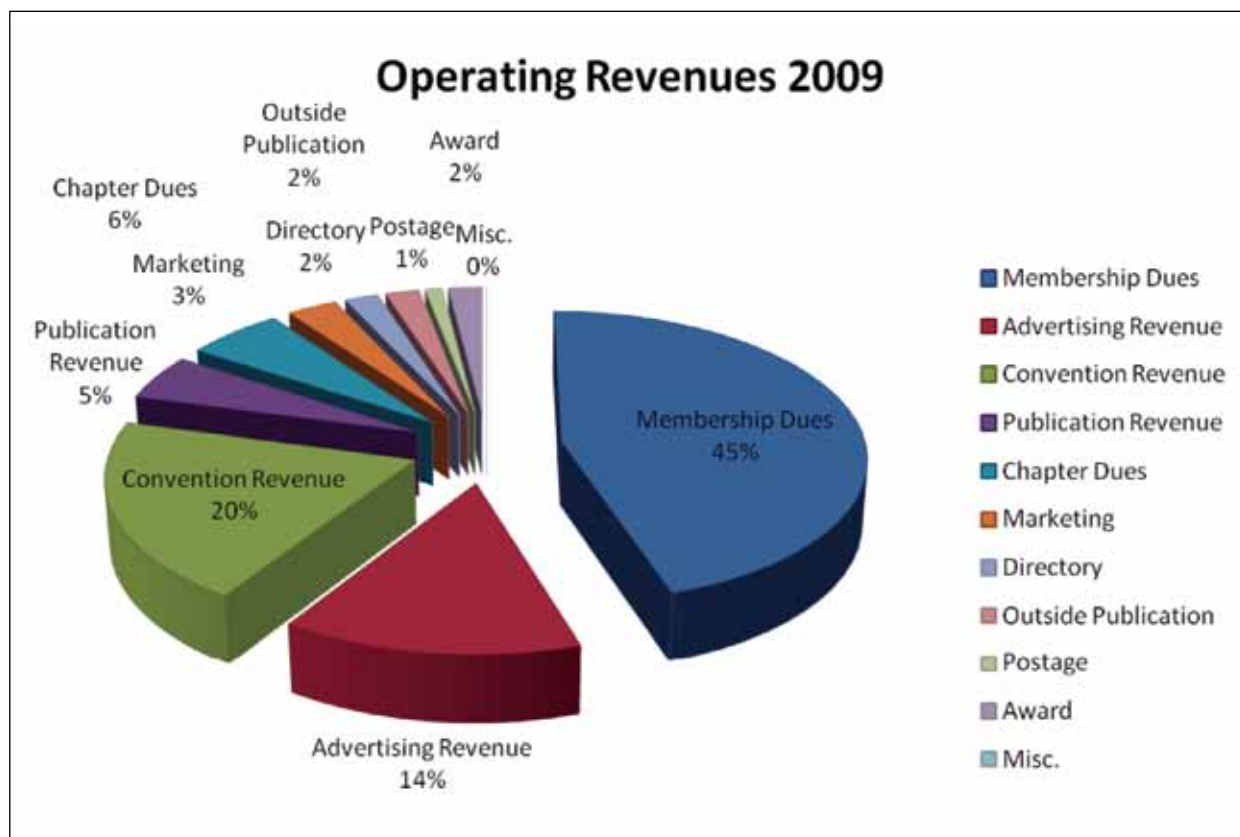
INTERNATIONAL CONCRETE REPAIR INSTITUTE

For many years, an Annual Report was traditionally published in the March/April issue of the *Concrete Repair Bulletin* (CRB), detailing ICRI activities from the previous year. In 2007, ICRI's Executive Committee asked CAM (ICRI's Management Company) to develop a "State

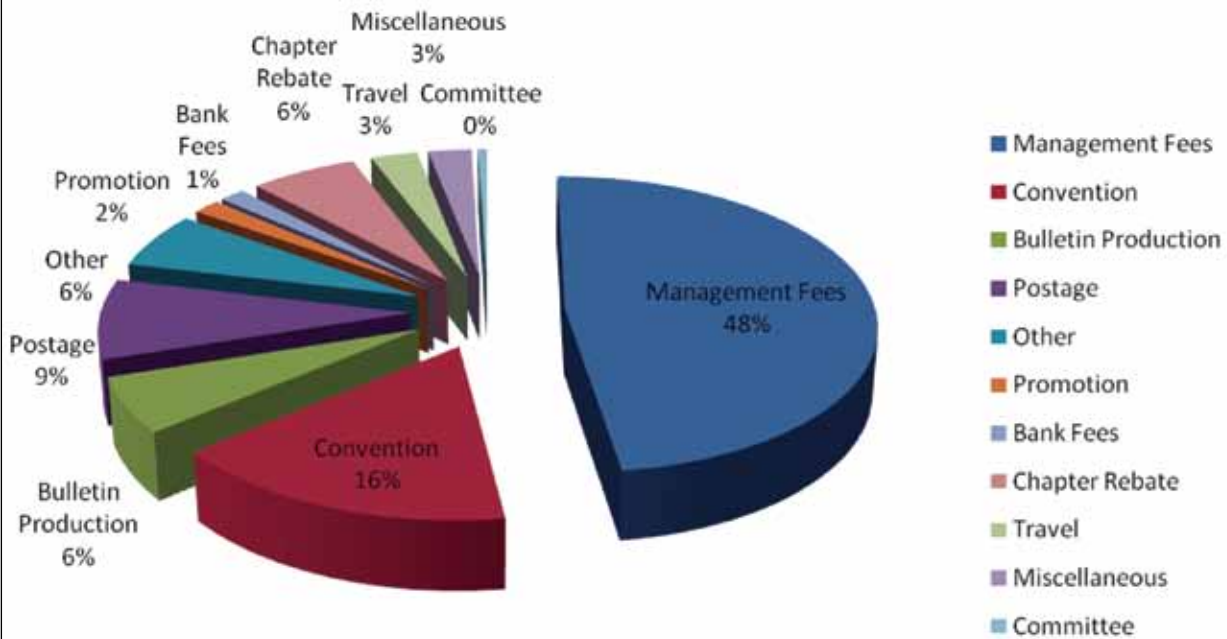
of the Institute" report to be used as a measurement tool for the Board of Directors to enable them to review the success of ICRI's policies and programs. This year, the Executive Committee asked that excerpts from the report be published in the *CRB*. Following are some of the highlights.

FINANCES

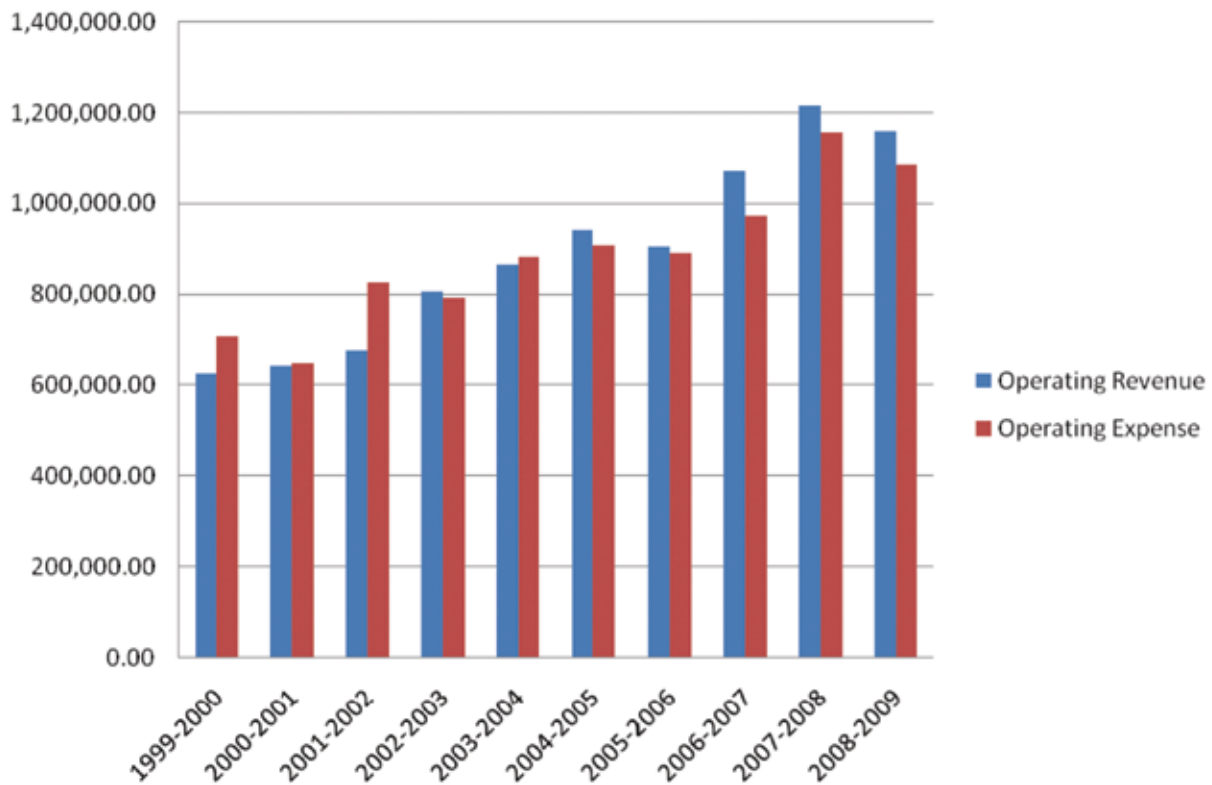
ICRI continues to be financially healthy. In 2008, we exceeded \$1,000,000 in revenue, and continue to be over that amount this year. The charts that follow show the distribution of funds. As you can see from the third chart, we have grown substantially over the last several years.



Operating Expenses 2009



Operating Revenue & Expense Comparison 2009



MEMBERSHIP

ICRI's membership numbers have been holding steady—even in this uncertain economy—and we have grown steadily over the years. We currently have around 1970 members, and hope to be back over 2000 members in the next few months.



CHAPTERS

Our chapters continue to be a big part of ICRI's overall success. As you can see from the following chart, the vast majority of our members belong to a chapter as well.

CODE	CHAPTER	MEMBERS
AZ	ARIZONA	52
BWC	BALTIMORE-WASHINGTON	180
CAR	CAROLINAS	117
CFL	CENTRAL FLORIDA	37
TRI	CHICAGO	116
CT	CONNECTICUT	31
DV	DELAWARE VALLEY	80
FWC	FLORIDA WEST COAST	107
GA	GEORGIA	69
GP	GREAT PLAINS	71
HOU	HOUSTON	69
IND	INDIANA	34
I/I	IOWA/ILLINOIS	20
MNY	METRO NEW YORK	80
MI	MICHIGAN	45
MIN	MINNESOTA	55
NE	NEW ENGLAND	84
NTX	NORTHERN TEXAS	59
NCA	NORTHERN CALIFORNIA	66
NOH	NORTHERN OHIO	35
ORV	OHIO RIVER VALLEY	27
PNW	PACIFIC NORTHWEST	26
PIT	PITTSBURGH	23
PR	PUERTO RICO	20
QP	QUEBEC PROVINCE	46
RM	ROCKY MOUNTAIN	50
SFL	SOUTHEAST FLORIDA	80
SC	SOUTHERN CALIFORNIA	41
SWF	SOUTHWEST FLORIDA	24
VA	VIRGINIA	59
WNY	WESTERN NEW YORK	17
WIS	WISCONSIN	27
TOTAL		1847

MEETINGS AND CONVENTIONS

Our meetings and conventions are where a great deal of volunteer effort help produce the products and programs that drive ICRI. The following is a history of attendance at ICRI conventions that shows the growth of the conventions over the last several years.

DATES	LOCATION	HOTEL	TOTAL ATTENDANCE	NONMEMBERS
10/21/09 - 10/23/09	TEMPE, AZ	THE BUTTES, A MARRIOTT RESORT	255	16
04/22/09 - 04/24/09	MINNEAPOLIS, MN	HILTON MINNEAPOLIS	204	8
10/29/08 - 10/31/08	ST. LOUIS, MO	MILLENNIUM HOTEL	285	16
4/16/08 - 4/18/08	DAYTONA, FL	THE SHORES RESORT & SPA DAYTONA	289	18
11/07/07-11/09/07	LAS VEGAS, NV	BALLY'S LAS VEGAS	246	11
4/19/07 - 4/20/07	ATLANTA, GA	SHERATON BUCKHEAD HOTEL	231	13
11/1/06 - 11/4/06	DENVER, CO	ADAMS MARK HOTEL	280	21
3/16/06 - 3/18/06	SAN DIEGO, CA	HYATT REGENCY ISLANDIA HOTEL & MARINA	162	11
11/2/05 - 11/5/05	KANSAS CITY, MO	KANSAS CITY MARRIOTT DOWNTOWN	178	8
3/2/05 - 3/5/05	BOSTON, MA	BOSTON PARK PLAZA	163	9
10/21/04 - 10/23/04	SAN FRANCISCO, CA	HILTON SAN FRANCISCO	209	—
4/1/04 - 4/3/04	CHICAGO, IL	INTER-CONTINENTAL CHICAGO	211	—
10/22/03 - 10/24/03	TAMPA, FL	TAMPA MARRIOTT WATERSIDE	278	—
3/27/03 - 3/29/03	VANCOUVER, BC, CANADA	THE FAIRMONT HOTEL VANCOUVER	182	—
10/24/02 - 10/26/02	PHOENIX, AZ	POINTE SOUTH MOUNTAIN RESORT	195	—
3/7/02 - 3/9/02	CHARLESTON, SC	CHARLESTON PREMIER RIVERVIEW	213	—
10/24/01 - 10/27/01	DALLAS, TX	HOTEL INTER-CONTINENTAL (GALLERIA)	146	—

Note: Creative Association Management obtained the contract for ICRI in June of 2001. Prior event history is limited or nonexistent for this.

None of the success detailed here would be possible without the incredible support ICRI receives from its members and from its chapters around the world. We thank you for this support and look forward to an even brighter 2010!