

STATE OF THE INSTITUTE

BY KELLY M. PAGE, ICRI EXECUTIVE DIRECTOR



INTERNATIONAL CONCRETE REPAIR INSTITUTE

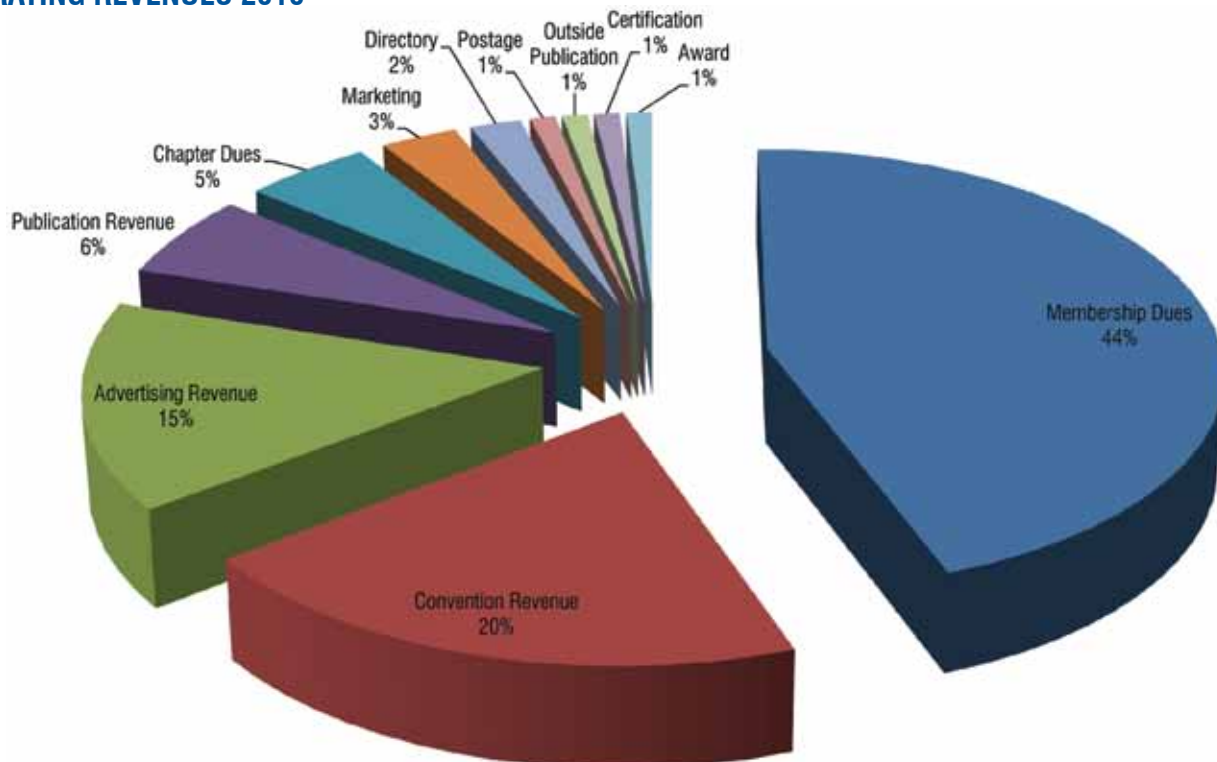
In the January/February 2010 issue, we published for the first time a State of the Institute report in the *Concrete Repair Bulletin* (CRB). We received such positive feedback that we have decided to make this an annual event, to be published in the

September/October issue each year. This State of the Institute report is used as a measurement tool by the Board of Directors and Executive Committee to enable them to review the success of ICRI's policies and programs. Following are some of the highlights.

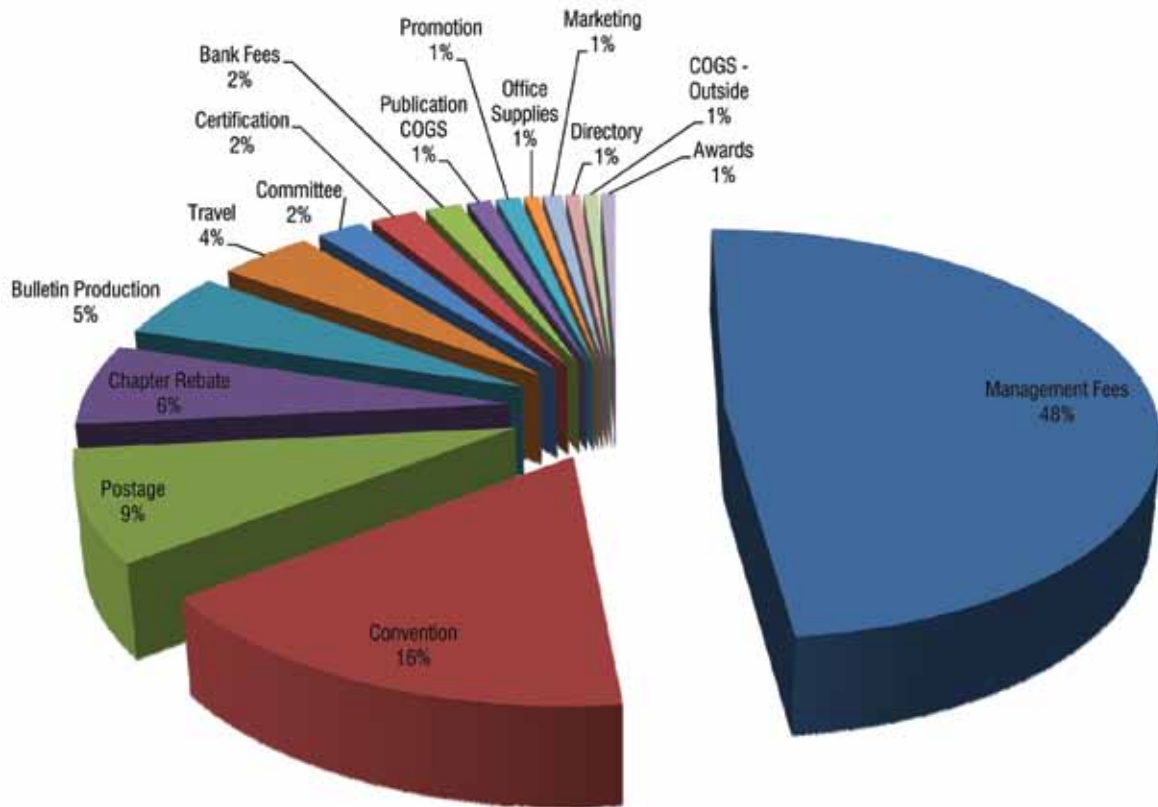
FINANCES

ICRI continues to be financially healthy. In 2009-2010 (ICRI's fiscal year runs April 1 to March 31), without a dues increase and in spite of the struggling economy, ICRI had its healthiest year ever. The charts that follow show the distribution of funds. As you can see from the third chart, we have grown substantially over the last several years.

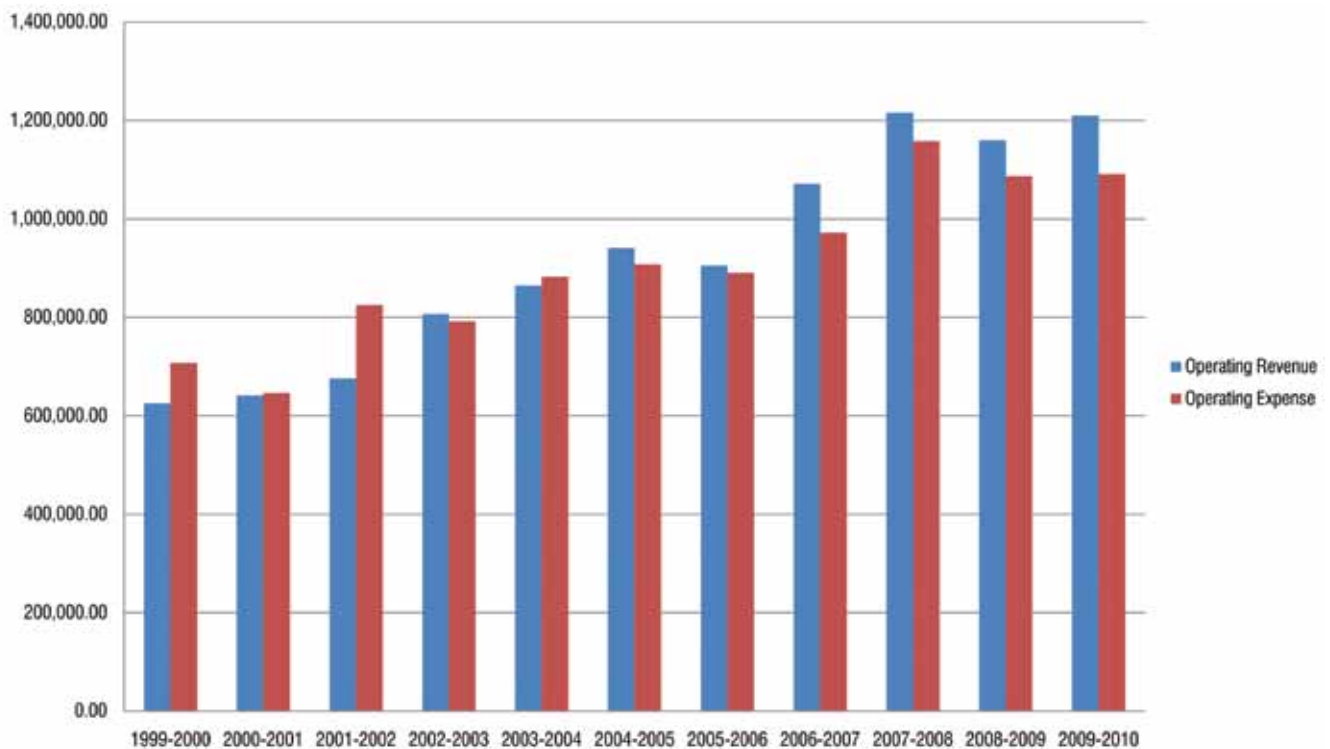
OPERATING REVENUES 2010



OPERATING EXPENSES 2010

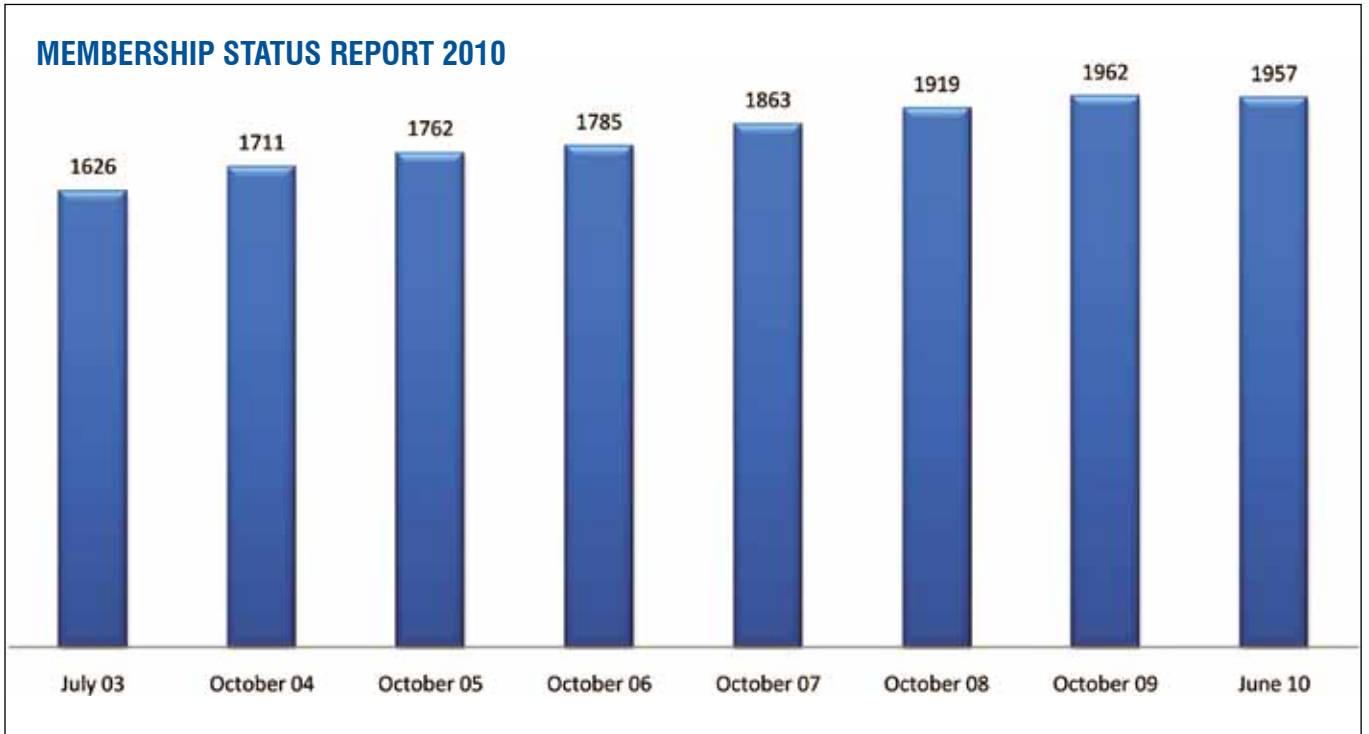


OPERATING REVENUE AND EXPENSE COMPARISON 2010



MEMBERSHIP

ICRI's membership numbers have been holding steady—even in this uncertain economy—and we have grown steadily over the years. We currently have approximately 1950 members, and ICRI's Marketing Committee is hard at work developing programs that will help increase these numbers.



CHAPTERS

Our chapters are a major part of ICRI's overall success. As you can see from the following chart, the vast majority of our members belong to a chapter as well. To give back to the chapters and to help them develop great programs and great leaders, ICRI is launching a Chapter Roundtable program. The first will be held in the Northeast U.S. in November, with three more to follow around the country so that every chapter will get a chance to participate.

CODE	CHAPTER	MEMBERS 2010
AZ	ARIZONA	46
BWC	BALTIMORE-WASHINGTON	165
CAR	CAROLINAS	102
CFL	CENTRAL FLORIDA	34
TRI	CHICAGO	98
CT	CONNECTICUT	26
DV	DELAWARE VALLEY	68
FWC	FLORIDA WEST COAST	84
GA	GEORGIA	61
GP	GREAT PLAINS	54
GS	GULF SOUTH	18
HOU	HOUSTON	47
IND	INDIANA	28
I/I	IOWA/ILLINOIS	15
MNY	METRO NEW YORK	73
MI	MICHIGAN	42
MIN	MINNESOTA	49
NE	NEW ENGLAND	70
NCA	NORTHERN CALIFORNIA	61
NOH	NORTHERN OHIO	32
NTX	NORTHERN TEXAS	54
ORV	OHIO RIVER VALLEY	23
PNW	PACIFIC NORTHWEST	28
PIT	PITTSBURGH	26
PR	PUERTO RICO	18
QP	QUEBEC PROVINCE	47
RM	ROCKY MOUNTAIN	43
SFL	SOUTHEAST FLORIDA	66
SC	SOUTHERN CALIFORNIA	28
SWF	SOUTHWEST FLORIDA	15
VA	VIRGINIA	50
WNY	WESTERN NEW YORK	21
WIS	WISCONSIN	21
TOTAL		1613

MEETINGS AND CONVENTIONS

Our meetings and conventions are also a critical part of the success of ICRI, where members come together to network; learn; and, perhaps most importantly and through a great deal of volunteer effort, help produce the products and programs that drive ICRI. Below is a history of attendance at ICRI conventions, which shows the growth of the conventions over the last several years.

DATES	LOCATION	HOTEL	TOTAL ATTENDANCE	NONMEMBERS
4/14/10 - 4/16/10	MYRTLE BEACH, SC	MYRTLE BEACH RESORT & SPA AT GRANDE DUNES	212	4
10/21/09 - 10/23/09	TEMPE, AZ	THE BUTTES, A MARRIOTT RESORT	255	16
04/22/09 - 04/24/09	MINNEAPOLIS, MN	HILTON MINNEAPOLIS	204	8
10/29/08 - 10/31/08	ST. LOUIS, MO	MILLENNIUM HOTEL	285	16
4/16/08 - 4/18/08	DAYTONA, FL	THE SHORES RESORT & SPA DAYTONA	289	18
11/07/07-11/09/07	LAS VEGAS, NV	BALLY'S LAS VEGAS	246	11
4/19/07 - 4/20/07	ATLANTA, GA	SHERATON BUCKHEAD HOTEL	231	13
11/1/06 - 11/4/06	DENVER, CO	ADAMS MARK HOTEL	280	21
3/16/06 - 3/18/06	SAN DIEGO, CA	HYATT REGENCY ISLANDIA HOTEL & MARINA	162	11
11/2/05 - 11/5/05	KANSAS CITY, MO	KANSAS CITY MARRIOTT DOWNTOWN	178	8
3/2/05 - 3/5/05	BOSTON, MA	BOSTON PARK PLAZA	163	9
10/21/04 - 10/23/04	SAN FRANCISCO, CA	HILTON SAN FRANCISCO	209	—
4/1/04 - 4/3/04	CHICAGO, IL	INTER-CONTINENTAL CHICAGO	211	—
10/22/03 - 10/24/03	TAMPA, FL	TAMPA MARRIOTT WATERSIDE	278	—
3/27/03 - 3/29/03	VANCOUVER, BC, CANADA	THE FAIRMONT HOTEL VANCOUVER	182	—
10/24/02 - 10/26/02	PHOENIX, AZ	POINTE SOUTH MOUNTAIN RESORT	195	—
3/7/02 - 3/9/02	CHARLESTON, SC	CHARLESTON PREMIER RIVERVIEW	213	—
10/24/01 - 10/27/01	DALLAS, TX	HOTEL INTER-CONTINENTAL (GALLERIA)	146	—

Note: Creative Association Management obtained the contract for ICRI in June of 2001. Prior event history is limited or non-existent for this.

None of the success detailed here would be possible without the incredible support ICRI receives from its members and from its chapters around the world. We thank you for this support and look forward to an even brighter 2011!