

# Beyond Repair – Color Finishes the Job

Concrete Stain Solutions For Concrete Repairs



Presented by:

**Naw**kaw®

*We change the color of masonry and concrete!*



INTERNATIONAL  
**CONCRETE REPAIR**  
INSTITUTE

2018 Spring Convention | **seis**vic solutions | April 11-13 | San Francisco



## What is Concrete Stain?

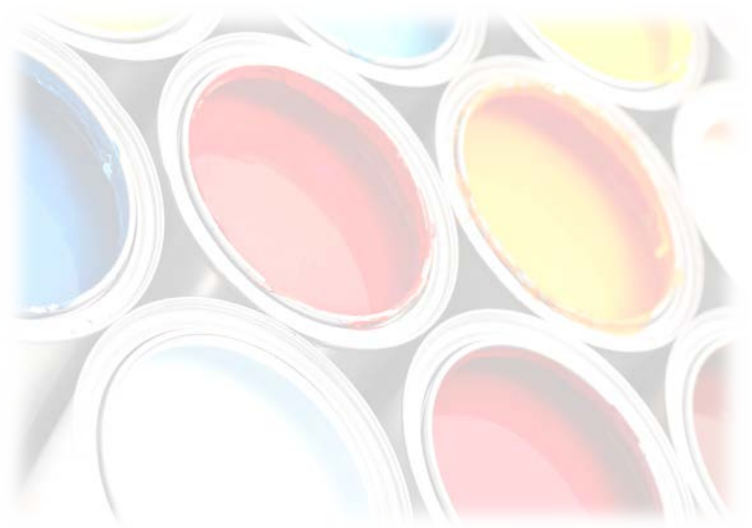
- Stain is a penetrative dye, made to color concrete
- There are currently stains on the market that are low odor, low VOC, as well as VOC-Free stains and stains containing up to 20% recycled materials

***Choose the right stain for your project!***



# Benefits of Stain

- Penetrates and protects
- Mold and mildew resistant
- Vapor permeable
- Will not chip, fade, or peel
- Precise color control for a natural look
- Unlimited colors and effects
- Long- lasting color solution with zero maintenance



# *“Paintenance”*

Paint is a surface coating that will eventually come off – sometimes in as little as three years.

In comparison, stain penetrates surfaces with color, for a long-lasting, maintenance-free solution.



# Concrete Stain Solutions

- Motor oil/crude oil (*old school!*)
- Acrylic-based
- Silicate-based
- Powdered dyes
- Solvent-based
- Acid-based



# *How it works!*

## *Standard Staining Procedures*

1. The crew arrives on-site to review the project. The crew will inspect the substrate to be stained, looking for any prep that may be needed prior to application. They will also review the site for any logistical concerns.
2. The customer selects a location to place the sample for review. The colors are mixed on-site and may be immediately adjusted for approval.

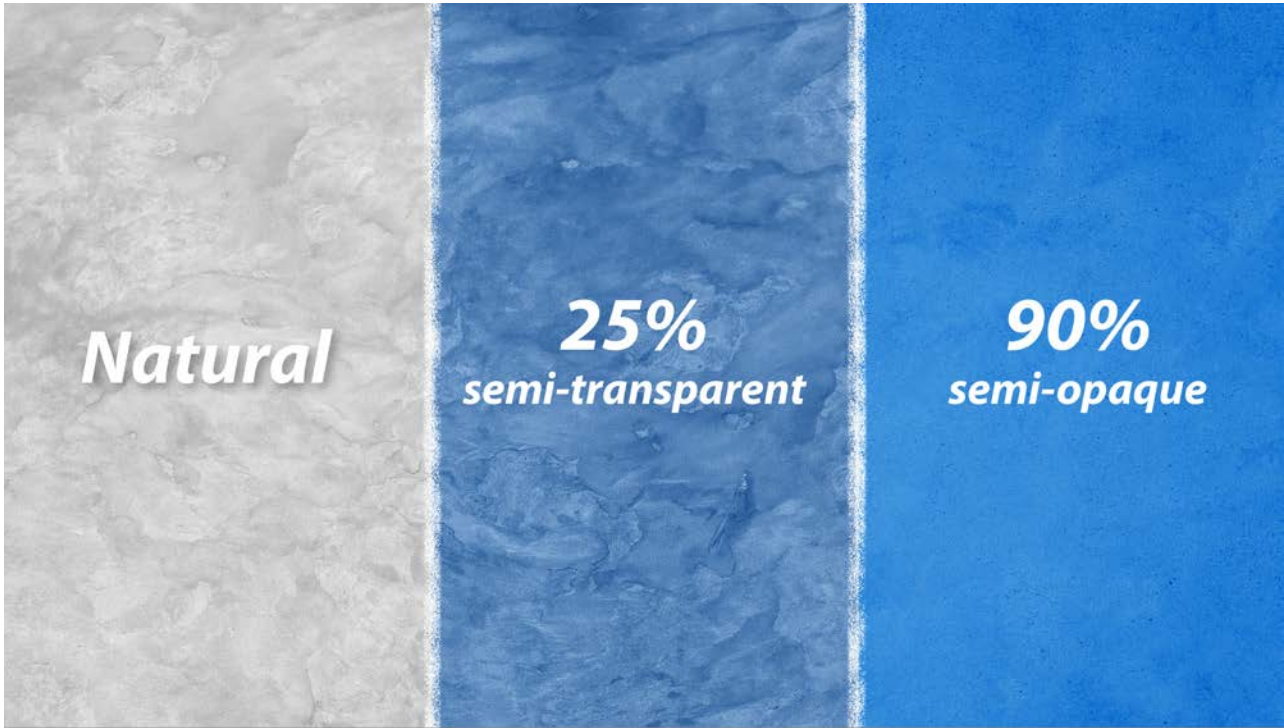


# *How it works!*

## *Standard Staining Procedures*

3. Once the sample is approved, the crew begins the work, coordinating logistics with the site supervisor or the customer.
4. Once the project is completed to the satisfaction of the crew foreman, a walk-through will be performed and punch-list items completed.





*Natural*

*25%  
semi-transparent*

*90%  
semi-opaque*

*Create the look you want!*



INTERNATIONAL  
**CONCRETE REPAIR**  
INSTITUTE


2018 Spring Convention | **seis**vic solutions | April 11-13 | San Francisco



# Examples of Application Use



INTERNATIONAL  
**CONCRETE REPAIR**  
INSTITUTE

2018 Spring Convention | **seis**  **solutions** | April 11-13 | San Francisco



INTERNATIONAL  
**CONCRETE REPAIR**  
INSTITUTE

2018 Spring Convention | **seismic**solutions | April 11-13 | San Francisco



INTERNATIONAL  
**CONCRETE REPAIR**  
INSTITUTE

2018 Spring Convention | **seismic**solutions | April 11-13 | San Francisco





INTERNATIONAL  
**CONCRETE REPAIR**  
INSTITUTE

2018 Spring Convention | **seismic**solutions | April 11-13 | San Francisco



INTERNATIONAL  
**CONCRETE REPAIR**  
INSTITUTE

2018 Spring Convention | **seismic**solutions | April 11-13 | San Francisco



INTERNATIONAL  
**CONCRETE REPAIR**  
INSTITUTE

2018 Spring Convention | **seismic**solutions | April 11-13 | San Francisco



INTERNATIONAL  
**CONCRETE REPAIR**  
INSTITUTE

2018 Spring Convention | **seismic**solutions | April 11-13 | San Francisco





INTERNATIONAL  
**CONCRETE REPAIR**  
INSTITUTE

2018 Spring Convention | **seismic**solutions | April 11-13 | San Francisco



INTERNATIONAL  
**CONCRETE REPAIR**  
INSTITUTE

2018 Spring Convention | **seismic**solutions | April 11-13 | San Francisco



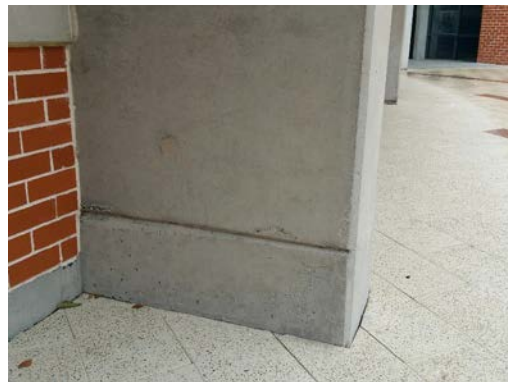
INTERNATIONAL  
**CONCRETE REPAIR**  
INSTITUTE

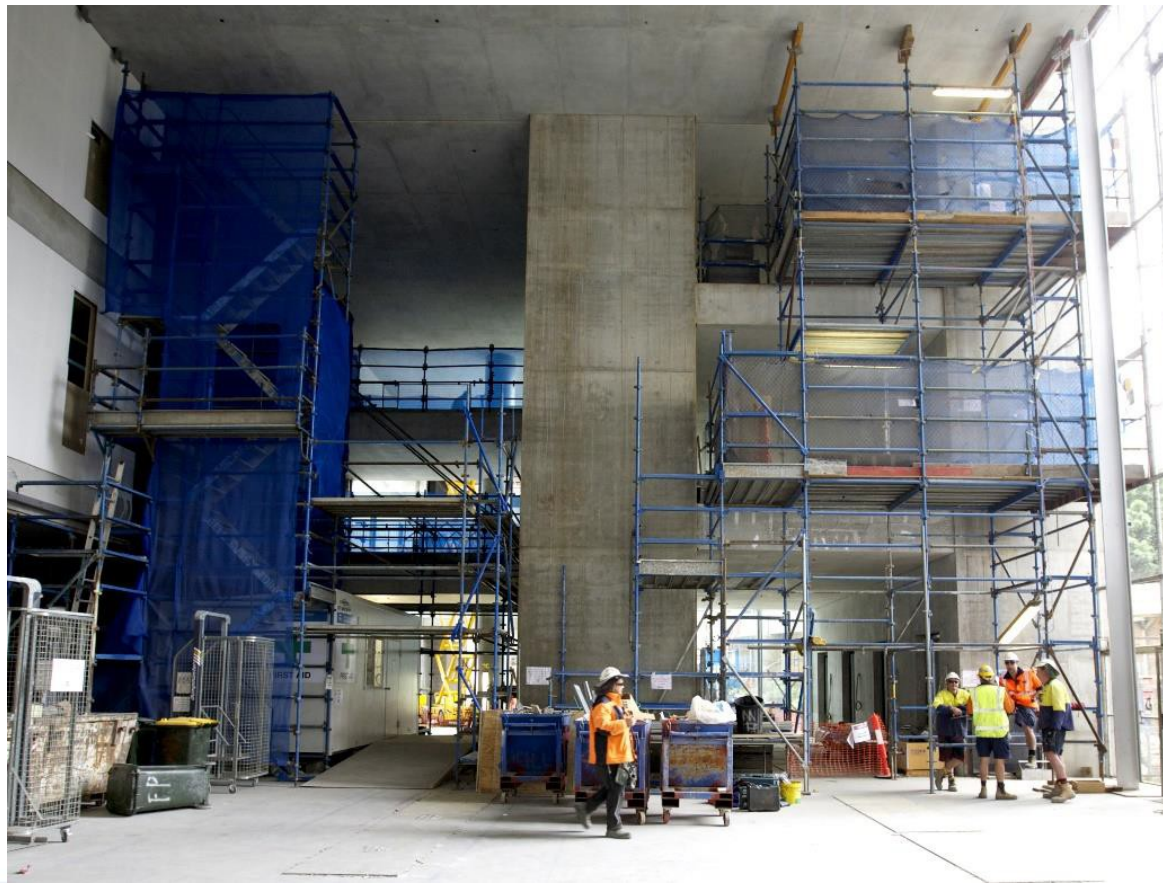
2018 Spring Convention | **seismic**solutions | April 11-13 | San Francisco



INTERNATIONAL  
**CONCRETE REPAIR**  
INSTITUTE

2018 Spring Convention | **seismic**solutions | April 11-13 | San Francisco





INTERNATIONAL  
**CONCRETE REPAIR**  
INSTITUTE

2018 Spring Convention | **seismic**solutions | April 11-13 | San Francisco



INTERNATIONAL  
**CONCRETE REPAIR**  
INSTITUTE

2018 Spring Convention | **seismic**solutions | April 11-13 | San Francisco



INTERNATIONAL  
**CONCRETE REPAIR**  
INSTITUTE

2018 Spring Convention | **seismic**solutions | April 11-13 | San Francisco





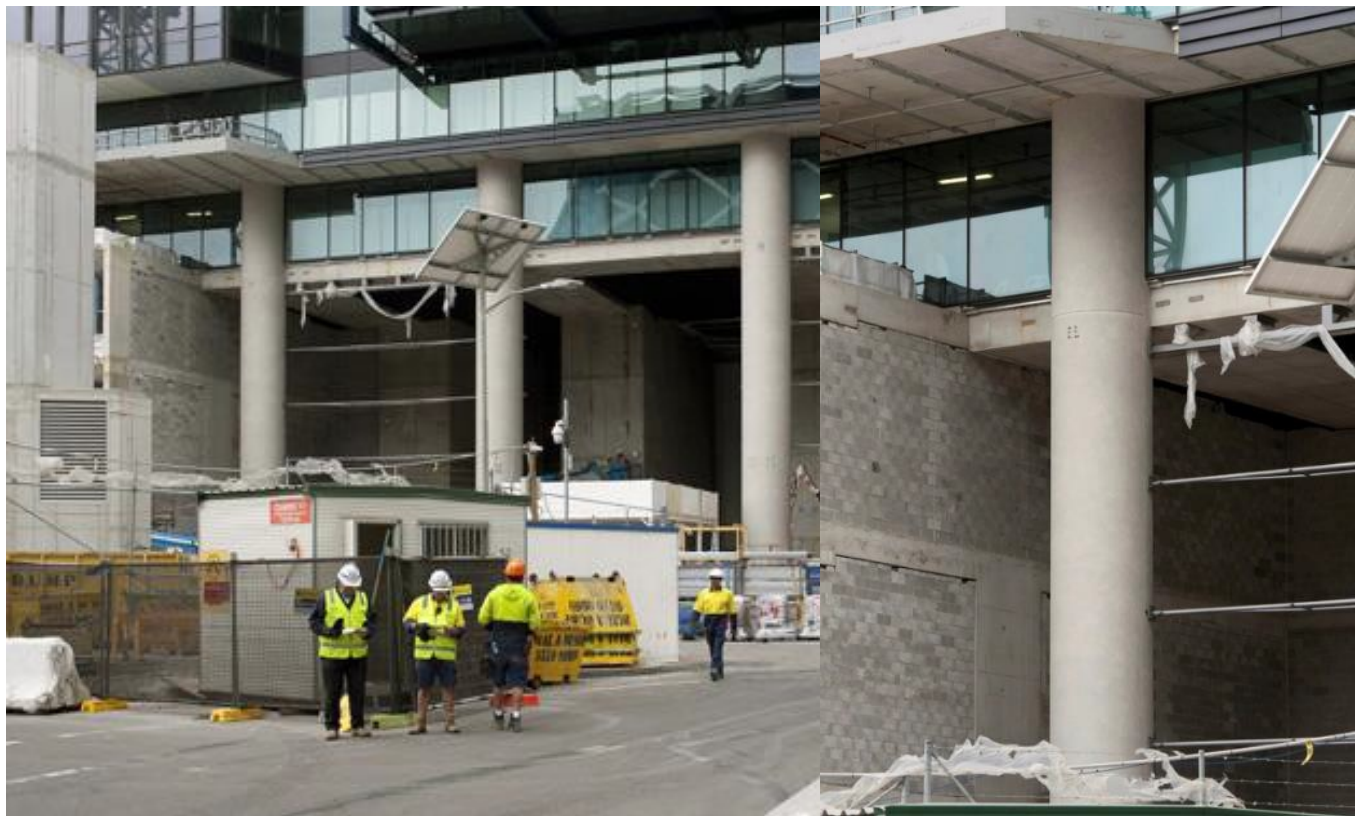
*Before*



INTERNATIONAL  
**CONCRETE REPAIR**  
INSTITUTE

2018 Spring Convention | **seismic**solutions | April 11-13 | San Francisco

*After*



INTERNATIONAL  
**CONCRETE REPAIR**  
INSTITUTE

2018 Spring Convention | **seismic**solutions | April 11-13 | San Francisco



INTERNATIONAL  
**CONCRETE REPAIR**  
INSTITUTE

2018 Spring Convention | **seismic**solutions | April 11-13 | San Francisco



INTERNATIONAL  
**CONCRETE REPAIR**  
INSTITUTE

2018 Spring Convention | **seismic**solutions | April 11-13 | San Francisco





INTERNATIONAL  
**CONCRETE REPAIR**  
INSTITUTE

2018 Spring Convention | **seismic**solutions | April 11-13 | San Francisco



INTERNATIONAL  
**CONCRETE REPAIR**  
INSTITUTE

2018 Spring Convention | **seismic**solutions | April 11-13 | San Francisco



INTERNATIONAL  
**CONCRETE REPAIR**  
INSTITUTE

2018 Spring Convention | **seismic**solutions | April 11-13 | San Francisco





INTERNATIONAL  
**CONCRETE REPAIR**  
INSTITUTE

2018 Spring Convention | **seismic**solutions | April 11-13 | San Francisco



INTERNATIONAL  
**CONCRETE REPAIR**  
INSTITUTE

2018 Spring Convention | **seismic**solutions | April 11-13 | San Francisco



# Choosing A Quality Stain Solution

- Environmentally friendly
- Water-based
- Low or Zero VOC
- Good reputation within the construction community
- Look for a company that stands behind their work and products with at least a 25-year warranty



# Who is Nawkaw?

- Founded in Canada in 1987
- Headquartered in Athens, GA since 1995
- Nawkaw is celebrating 30 years of business!
- Most experienced stain technicians in the industry—bringing years of expertise and know-how to a variety of applications and techniques



INTERNATIONAL  
CONCRETE REPAIR  
INSTITUTE

2018 Spring Convention | **seismic**solutions | April 11-13 | San Francisco

# Nawkaw<sup>®</sup>

*HSW CEU's Available!*



*Ask about our  
25-year warranty!*



INTERNATIONAL  
CONCRETE REPAIR  
INSTITUTE

2018 Spring Convention | **seismic**solutions | April 11-13 | San Francisco